

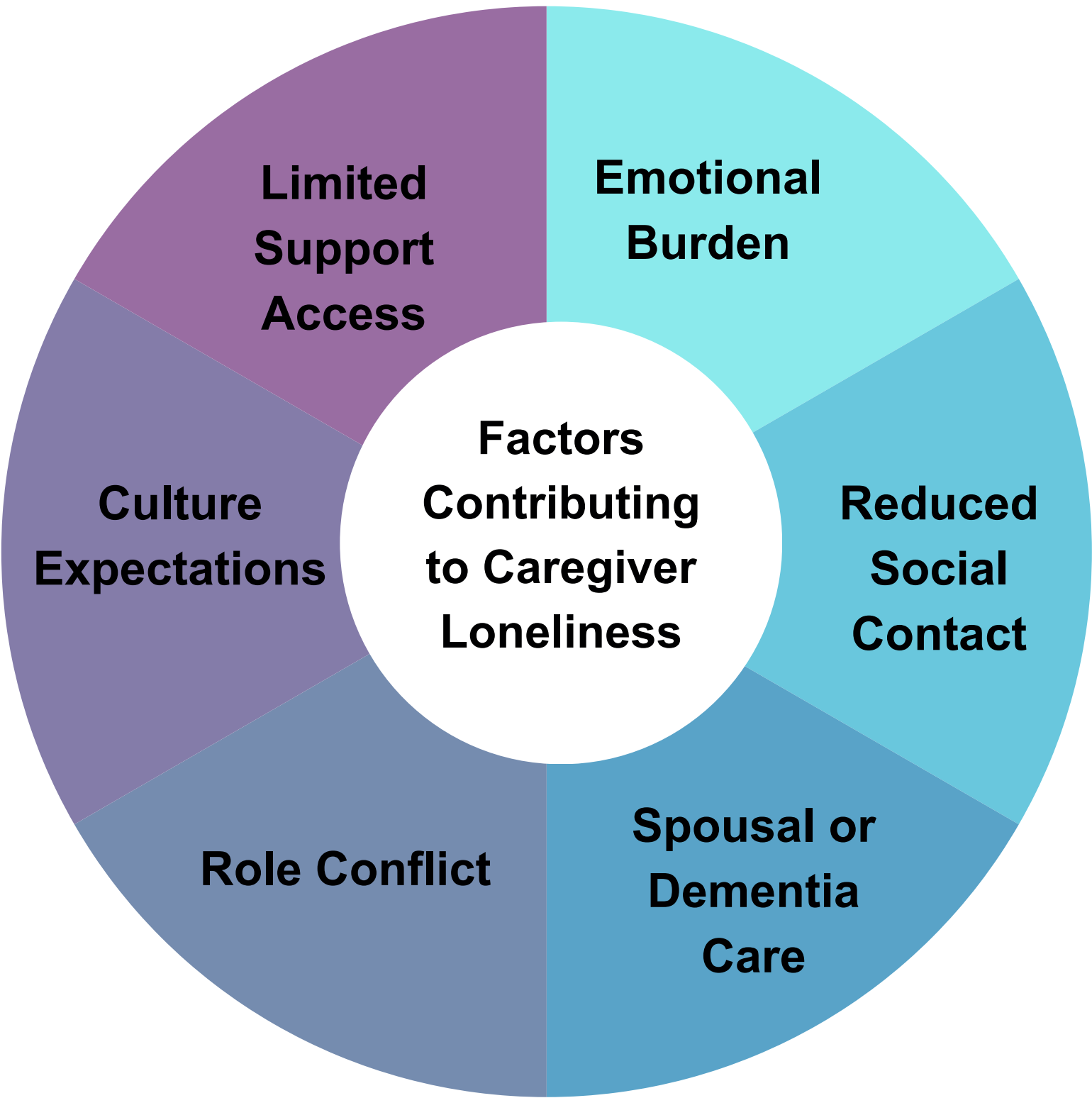
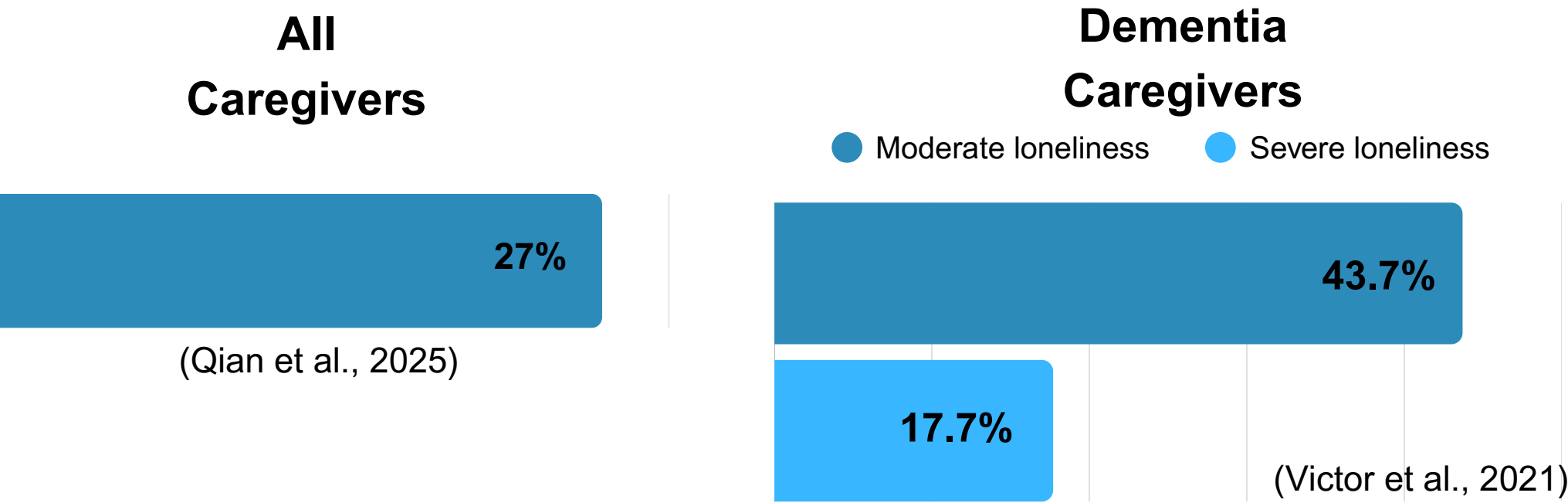
CAREGIVING AT THE CROSSROADS:  
EXPLORING FAMILY CAREGIVERS AND THE DIRECT CARE WORKFORCE  
THROUGH THE CENTER FOR EQUITY IN AGING

Pathway Scholars: Niramon Wongyai, BSN, RN, & Natnamon Chumpulai, BSN, RN  
Mentors: Katherine Ornstein, PhD, MPH; Katherine Marx, PhD, MPH; & Yiqing Qian, PhD, MPH

LONELINESS AND ISOLATION AMONG  
END-OF-LIFE FAMILY CAREGIVERS

Niramon Wongyai, BSN, RN

Prevalence of Loneliness Among Caregivers



LONELINESS AMONG END OF LIFE CAREGIVERS

- Prevalent but often under addressed in serious illness.
- Linked to identity loss, emotional distress, and social withdrawal.
- Few validated tools and limited tested interventions.
- Highlights urgent need for emotional support and research.

(Ornstein, 2017)



Mission

To create transformative knowledge and promote equity for older adults, caregivers, and their communities through research, clinical innovation, education, and policy, using a transdisciplinary and community-engaged approach

CENTER ACTIVITIES

- Virtual Meetings for the Dying and Death Course, Summer 2025
- Social Connections Research Interest Group
- Literature Reviews
- Exposure to National Datasets.
- A Learning Experience about IRB Application and Intervention Development

WHAT WE HAVE GAINED?

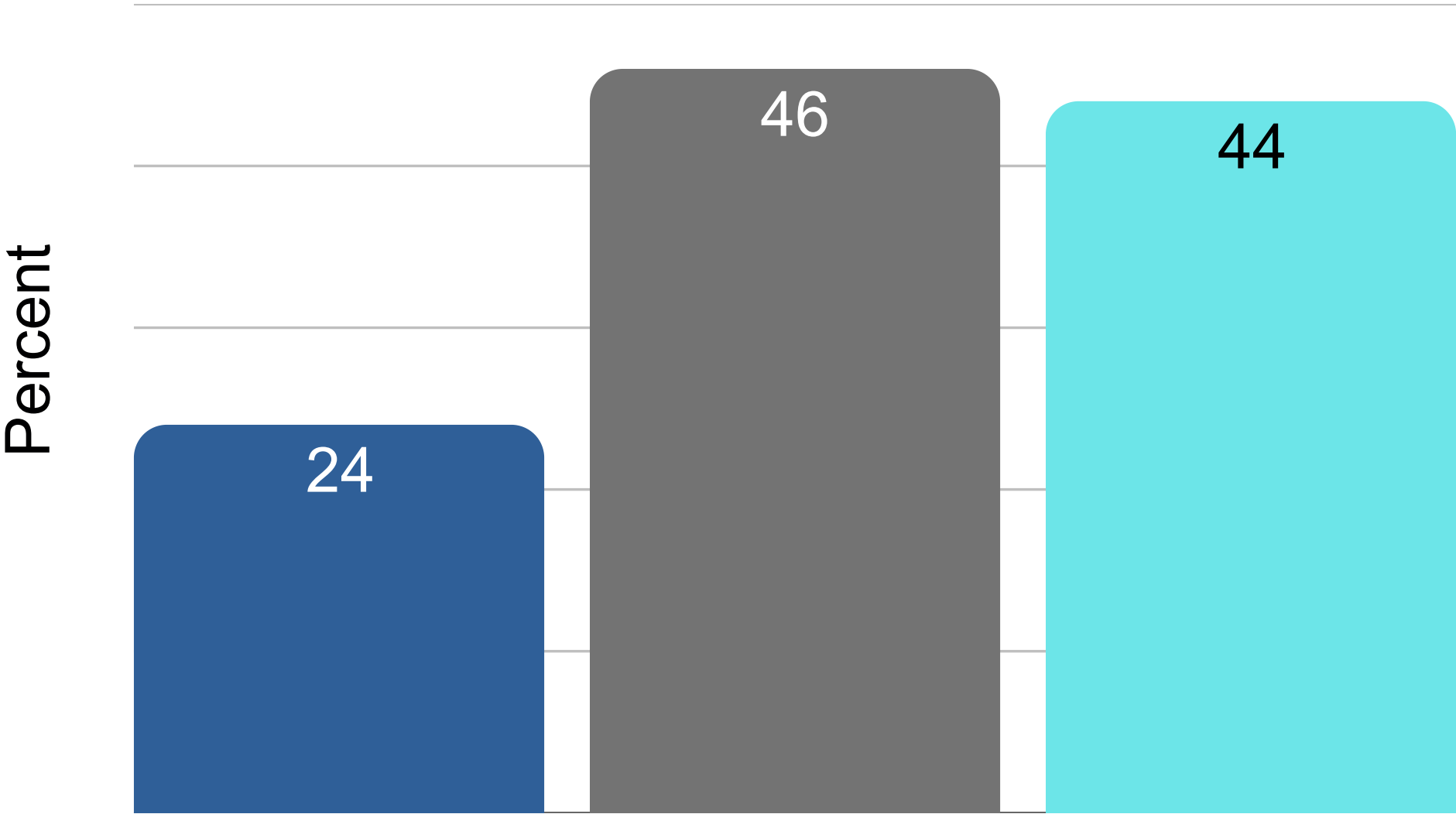
- Research skills (literature review, methods, and research strategies)
- Simulation reflections in classes
- Writing and presenting skills
- Social networking opportunities
- Dissertation defense presentations
- Engaging with the academic community
- Application suggestions for PhD programs

MOTIVATIONS AND JOB  
SATISFACTION IN IMMIGRANT DIRECT  
CARE WORKERS FOR OLDER ADULTS  
WITH DISABILITY

Natnamon Chumpulai, BSN, RN

Disability prevalence among older adults  
in the US in 2025, by age group

- 65-74 years
- 75 years and older
- 65 years and older (Overall)

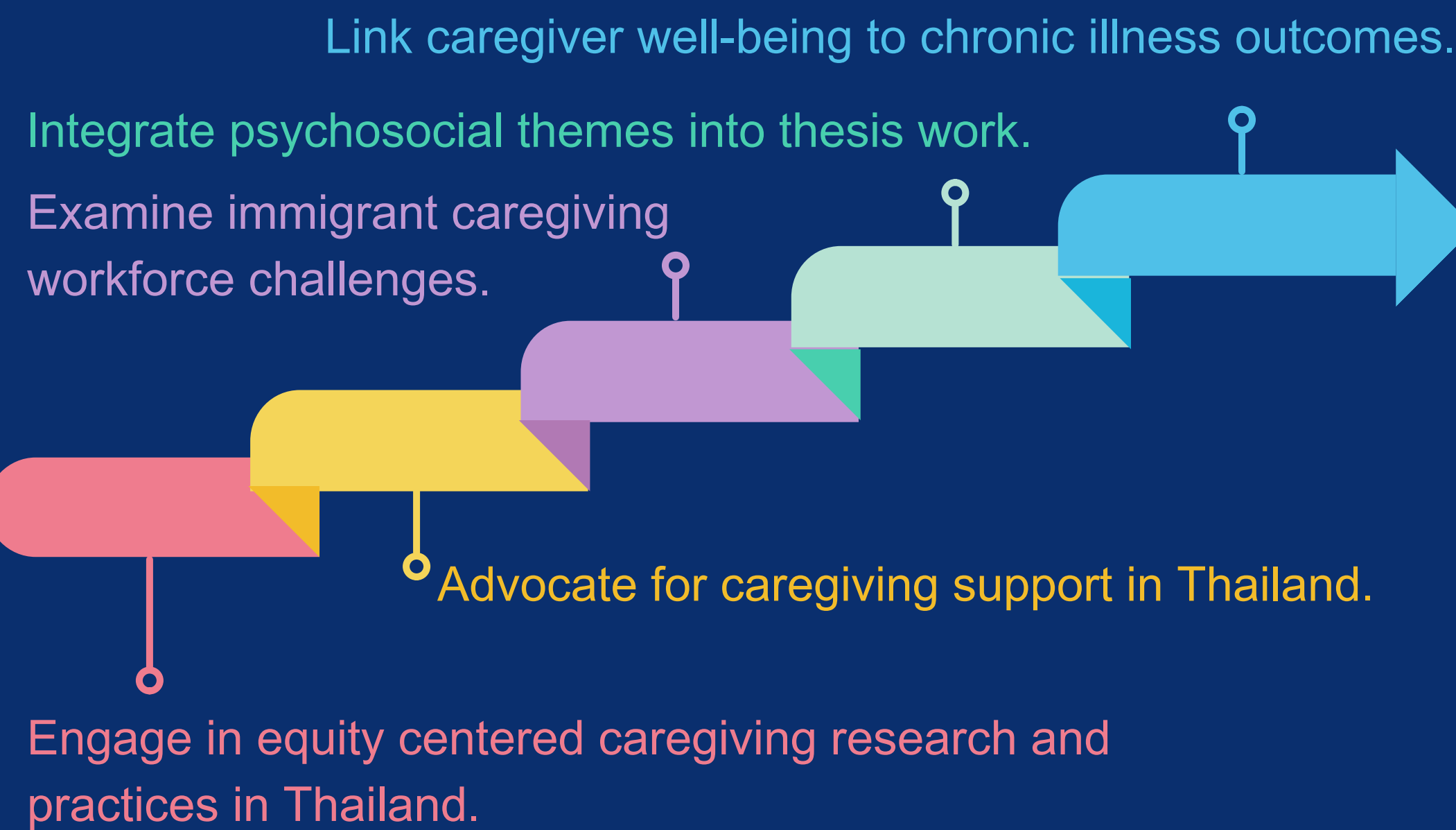


Two most common types  
of Disability

- Mobility disability
- Cognitive disability

- Immigrant DCW are more likely to be employed. (Covington-ward, 2016; Iecovich, 2011)
- Job satisfaction depends on multiple factors. (Covington-ward, 2016; Iecovich, 2011)
- DCW has seen as temporary job. (Covington-ward, 2016)
- US-born DCW experience higher burnout than foreign DCW. (Lin et al., 2015)
- Higher pay may attract African immigrant workers. (Covington-ward, 2016; Iecovich, 2011)

FUTURE DIRECTIONS



COMMON THEMES

Common Emotional  
Burdens

Stress  
Isolation  
Undervalued labor

Need for Support  
Systems

Peer groups, Mental Health Access,  
Culturally Sensitive Communication

Policy  
Recommendations

Improve Recognition, Training, Caregiver  
Compensation, Family Support Services

ACKNOWLEDGEMENTS

Dr. Jennifer Wenzel, Dr. Jermaine Monk,  
Thomas Hinneh, Sarah Won, Lauren Brereton Cox, Colleagues,  
Pathway to PhD Nursing Scholars Program. Johns Hopkins  
Pathways to PhD Provost's award

REFERENCES



PROFILES

Natnamon Chumpulai  
BSN, RN  
Niramon Wongyai  
BSN, RN

