

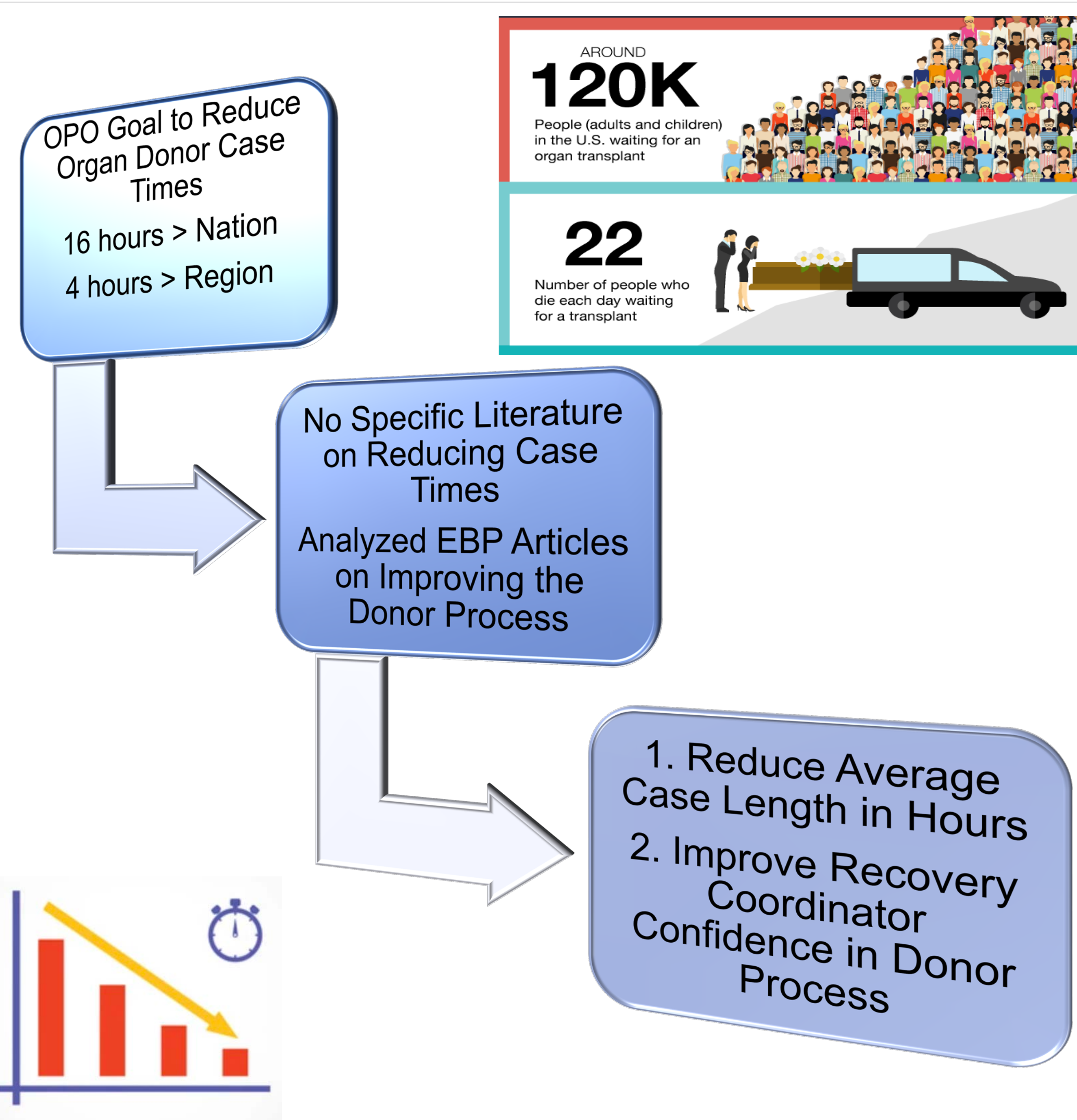
Using an Onsite Resource Guide to Reduce Organ Donor Case Times

Amy Hamtak, BSN, RN, CCRN, CPTC

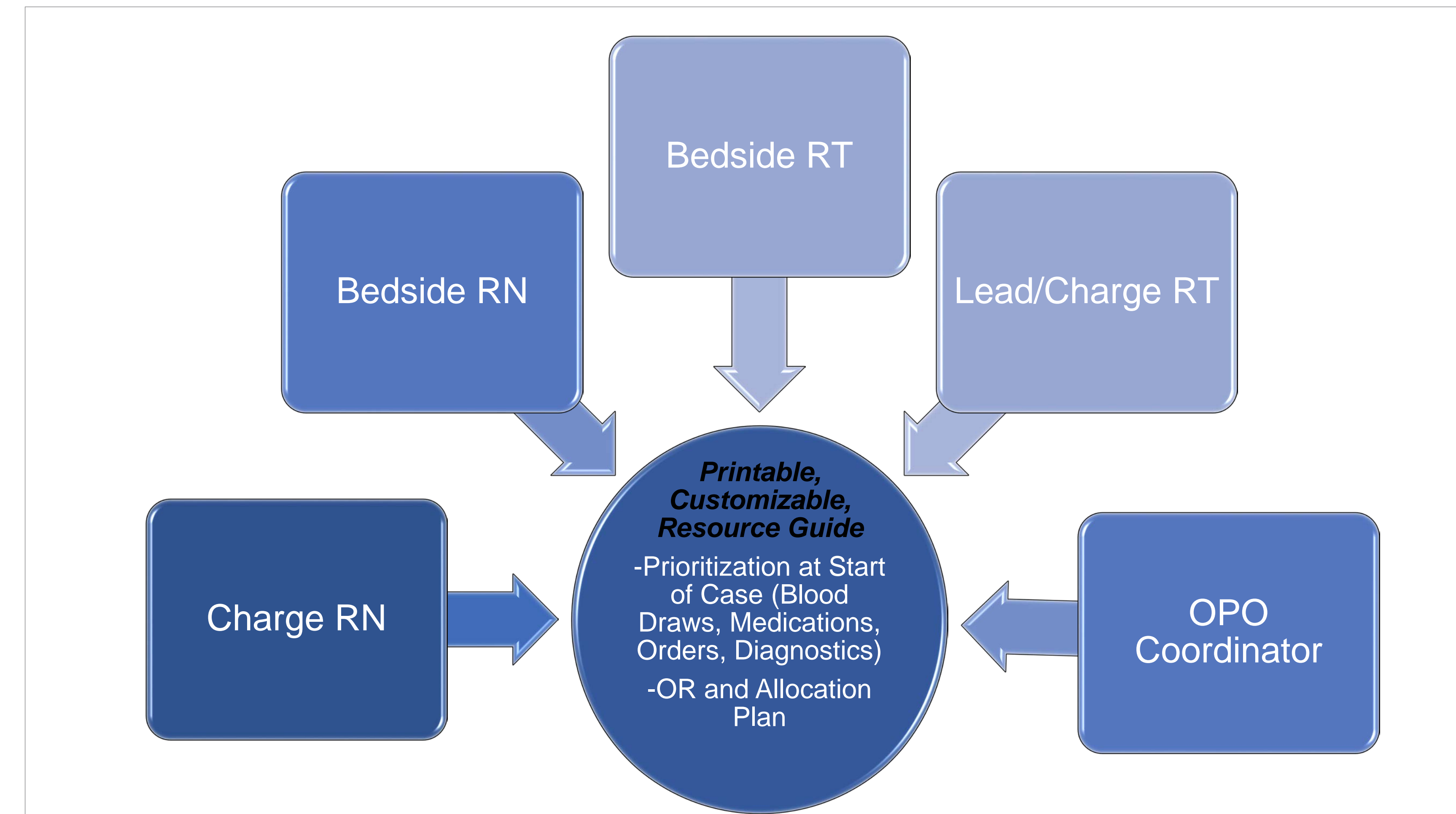


JOHNS HOPKINS
SCHOOL of NURSING

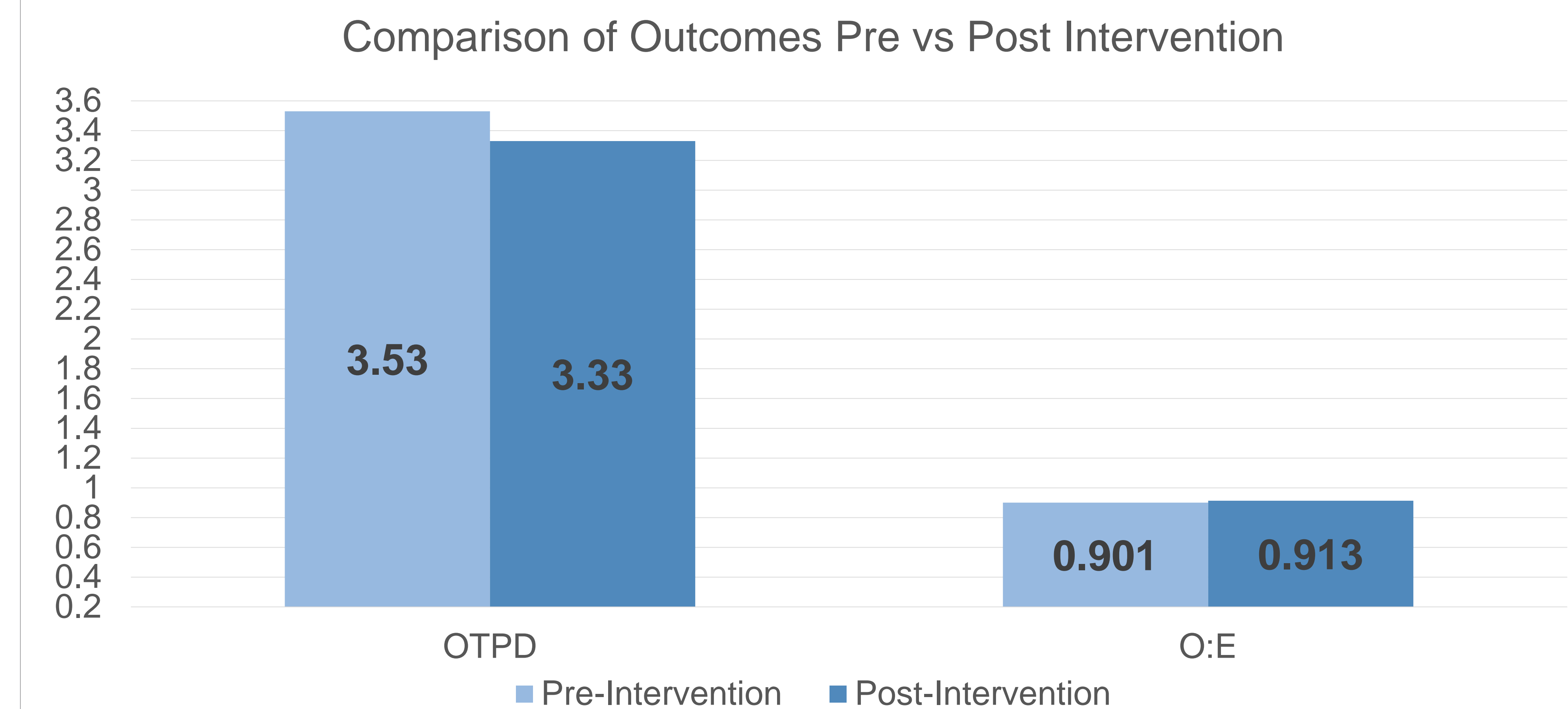
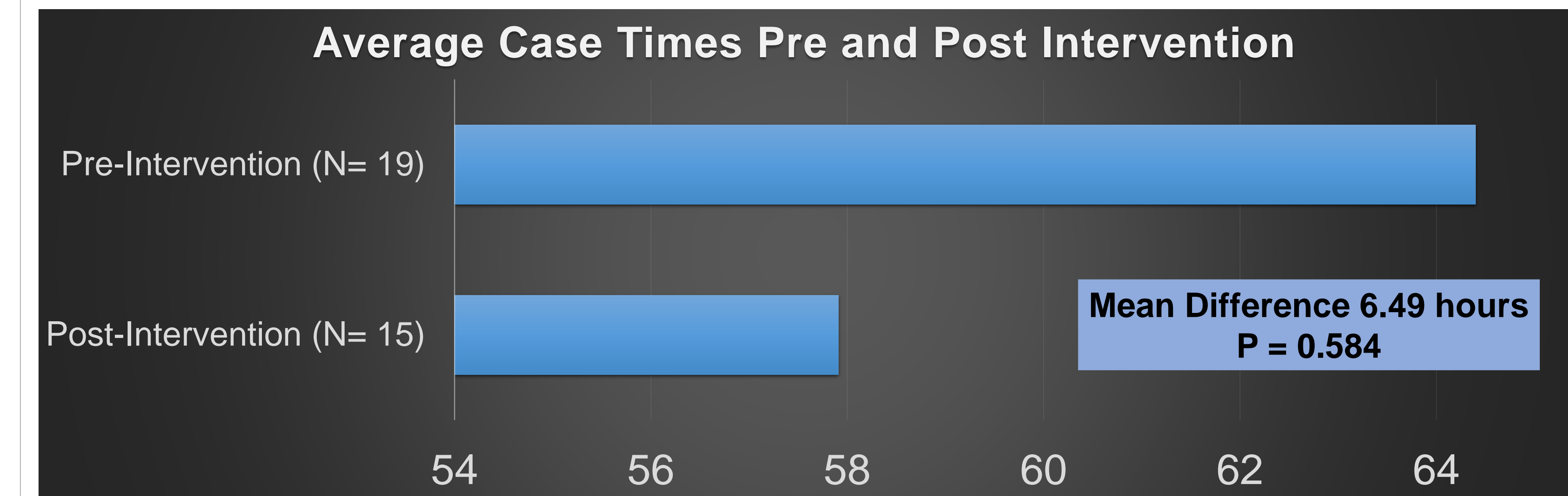
Introduction, Background, Aims



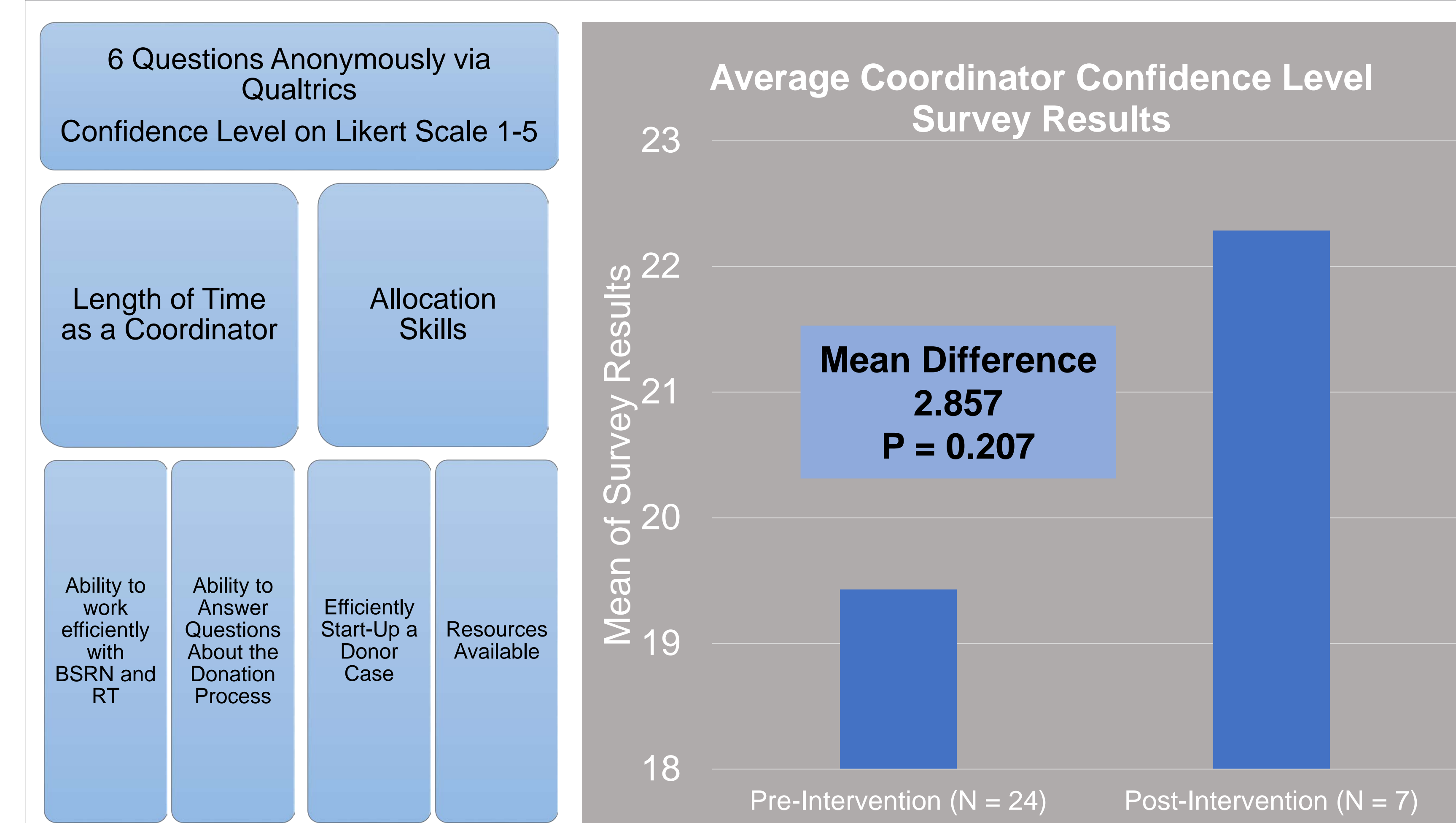
Case-Timing Intervention



Results, Conclusions, Sustainability



Recovery Coordinator Confidence



Limitations

- Donor Sample Size
- Coordinator Sample Size
- Division of BD vs DCD Donors
- Xclamp Delays//En-Bloc Recoveries
- Hospital Factors (Staffing, Experience)
- Donor Stability/Organ Function

Sample and Location

