

Welcome to the 2023 Annual Research Retreat



*If you have questions during
the presentations, please type them in the chat box*



JOHNS HOPKINS
SCHOOL of NURSING

Johns Hopkins School of Nursing 2022 Research Retreat

December 2, 2022



JOHNS HOPKINS
SCHOOL of NURSING

NURSING OFFICE OF
RESEARCH ADMINISTRATION

Table of Contents

JHSON Centers

Center for Equity in Aging	4
Supporting documents	4.1 – 4.9
Center for Global Initiatives	5
Center for Immersive Learning and Digital Innovation	6
Supporting documents	6.1
Center for Infectious Disease and Nursing Innovation	7
Clinical Translational Laboratory	8
Supporting documents	8.1 – 8.18
COMPASS Center	9
Supporting documents	9.1 – 9.11
RESILIENCE Center	10
Supporting documents	10.1 – 10.8

NORA Resources

Human-Centered Design	12
Supporting documents	12.1 – 12.2
Biostatistics and Methods Core	13
Supporting documents	13.1 – 13.16
Nursing Office for Research Administration (NORA)	14
Supporting documents	14.1 – 14.6
Qualitative Core	15
Supporting documents	15.1 – 15.7

JHU Resources

Center for AIDS Research	17
Supporting documents	17.1 – 17.2
Center for Nursing Inquiry	18
Supporting documents	18.1
Clinical Research IT Systems and Services	19
Supporting documents	19.1
ClinicalTrial.gov Program	20
Supporting documents	20.1 – 20.2
Community Research Advisory Council (C-RAC)	21
Department of Art as Applied to Medicine	22
Supporting documents	22.1
Education and Training Opportunities at the Johns Hopkins Center for Health Equity	23
Supporting documents	23.1 – 23.12
I-Corps Program	24
Johns Hopkins Sheridan Libraries	25
REDCap	26
Supporting documents	26.1 – 26.3
Research Coordinator Support Services (RCSS)	27
Supporting documents	27.1 – 27.2
School of Medicine Biomedical Informatics and Data Science Courses	28
Supporting documents	28.1
SON Research Retreat 2022 ICTR Informatics Presentation	29
Supporting documents	29.1 – 29.7
Welch Center	30

JHSON Centers

Center for Equity in Aging

nursing.jhu.edu/aging

Center for Equity in Aging



JOHNS HOPKINS
SCHOOL *of* NURSING

Mission

To enhance equity by improving the well-being of older adults and those living with serious illness in the community and across all residential settings.

The Center supports a robust and interdisciplinary research community of faculty and trainees focused on scholarship, education, and advocacy



Meet Our Team



Katherine Ornstein
Center Director



Quincy Samus
Associate Director
of Innovation and
Implementation



Kali Thomas
Associate Director
of Health Services
Research

Data Analyst Team:

Hanna Charankevich:
Senior Data Analyst
Yifan Liu: Data Analyst

Steering Committee:

Sarah Szanton
Kathryn
McDonald
Anna Beeber

Operations:

Sarah Allgood: Director of
Operations
Samantha Curriero: Strategist
Erika Hornstein: Strategist
Linda Lauristen: Administrative
Coordinator

Principal Faculty:

Martha Abshire, Anna Beeber, Valerie Cotter
Rita D'Aoust, Patricia Davidson, Patrick Doyle
Jessica Gill, Byran Hansen, Hae Ra Han
Melissa Hladek, Binu Koirala, Junxin Li
Katherine Marx, Kathryn McDonald, Carrie L.
Neiman, Katherine Ornstein, Jeanine Parisi
Lauren j. Parker, Craig Pollack, Nicolas Reed
Natalie Reiger, Laura Samuel, Quincy Samus
Bonnielin Sweenor, Sarah Szanton, Kali Thomas
Janiece Taylor, Jannifer Wenzel, Rebecca Wright

Research

Develop, implement, and evaluate models of home and community-based care to address pressing public health concerns

Research Training

Mentorship and training opportunities in new approaches to aging research; Post doctoral opportunities

Relationship Building

Develop and maintain relationships with aging-related community-based and health organizations to improve interventions

Application of Evidence

Implementation of proven interventions within the community and health care settings

Scholarship Generation

Provide educational and collaborative activities and seminar series focusing on intervention challenges; Sponsor of lectures from internationally recognized researchers in areas relevant to Center faculty activity



Center Activities

Center Structure

Center for Equity in Aging



Partner Centers and Departments



Pepper Center
Older Americans
Independence Center
(OAIC)

CoAH

Hopkins Business of
Health Initiative

Hopkins' Economics
of Alzheimer's
Disease & Services
Center (HEADS)

Center for
Transformative
Geriatric Research

Johns Hopkins
Disability Health
Research Center

Health Services and
Outcomes Research
for Aging
Populations Training
Program

Lipitz Center for
Integrated Health
Care

Alzheimer's Disease
Resource Center For
Minority Aging
Research

Division of Geriatric
Medicine and
Gerontology, Dept
Medicine

2023 Pilot Projects

Janiece Taylor

Testing a behavioral intervention to address pain and depressive symptoms among older women with disabilities

Erin Spaulding

Human-centered design to inform the development of a “TechConnect” digital and health equity intervention for chronic disease management among older adults

Jing Huang

Sleep and cognitive progression in cognitively intact older adults with subjective memory decline

Suratsawadee Kruahong

Wellness and needs of women after cardiac ICU stay (Well NOW)

Upcoming Events & Opportunities

Pilot Grants –applications
open in January 2024

Intervention Working Group
December 14th @ noon
featuring Jiabin Shen from
University of Massachusetts

Collaborative on Caregiving Science Across
the Lifecourse series
January 10th @ noon featuring Iveris
Martinez from California State University,
Long Beach

Travel Grants – rolling
applications

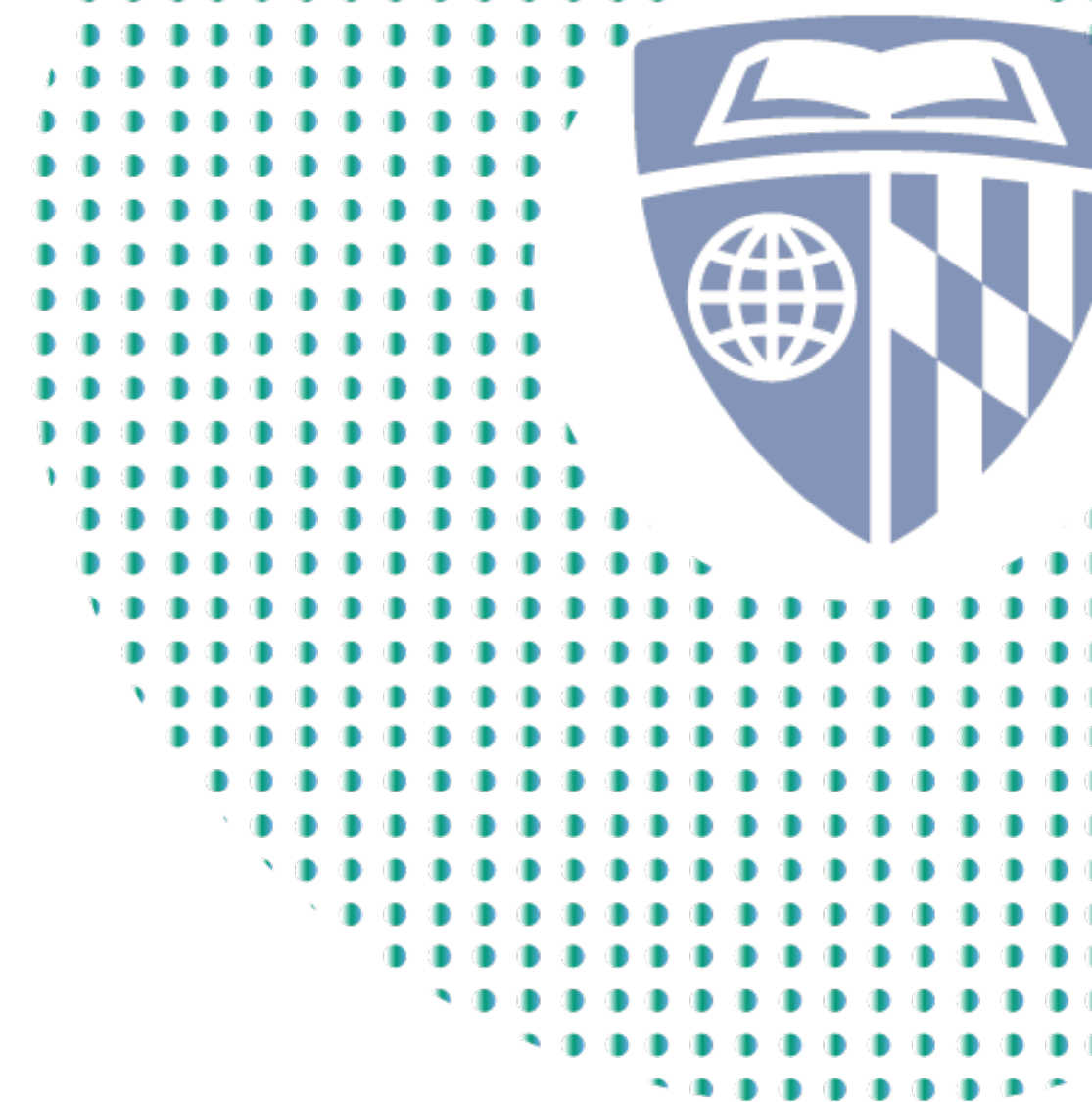
“Issue Is...” series
January 16th @ 3pm featuring
Aaron Yao from VillageMD



<https://nursing.jhu.edu/excellence/aging/center/>

AgingCenter@jhu.edu

Connect
with us!



Center for Global Initiatives

nursing.jhu.edu/global

Center for Health Equity





JOHNS HOPKINS
CENTER *for* HEALTH EQUITY

Education and Training Opportunities at the Johns Hopkins Center for Health Equity

Johns Hopkins Center for Health Equity

Our Mission:

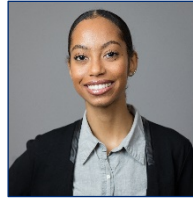
Promote equity in health for populations experiencing health disparities through:

1. Advancing scientific knowledge
2. Educating and training leaders
3. Partnering with communities
 - Raising public awareness of health inequities
 - Promoting sustainable changes in practice and policy



Training Program

- Created a training program for health professionals and researchers in 2010
- Trained over 500 individuals ranging from high school and undergraduate students to Master's and pre-doctoral students, postdoctoral fellows, and junior faculty
- Trainee accomplishments include:
 - National awards, grants, and faculty positions
 - Health equity publications
 - Leadership roles
 - High school and undergraduate students who matriculated into medical, nursing, public health, or other graduate programs in science



Education & Training Programs



Johns Hopkins Center for Health Equity Education and Training Program Activities

Health Equity Jam Sessions

Monthly seminars featuring senior and trainee health equity researchers

Special symposia to advance the national agenda on priority areas

Networking and collaboration opportunities with experts in the field

Research Study Opportunities

Participation in Center research meetings and study activities

Opportunities to engage in faculty research activities

Health Equity Researcher Resource e-newsletter

Faculty Mentorship

Novel trainee intake process for individualized faculty mentoring

Annual speed mentoring events

Faculty showcase to highlight available training opportunities

Didactic Coursework

Applications of Innovative Methods in Health Equity Research

Local and Global Best Practices in Health Equity Research

Foundations of Health Equity Research

Community Engagement

Opportunities to attend community advisory board meetings

Community partner practicum opportunities

Longitudinal relationship building with partners

Jam Sessions and Special Events



JOHNS HOPKINS
CENTER for HEALTH EQUITY

DECEMBER 2023
JAM SESSION



ODIS JOHNSON JR., PHD

Measurement and Modeling of
Systemic and Structural
Racism: Beyond the
Durkheimian Ecological Fallacy

WEDNESDAY, DECEMBER 13, 2023
3:00 - 4:30 PM
VIRTUAL

Registration required: bit.ly/3PvtDJJ

- Provides a forum for faculty, trainees, and staff working on health equity research to discuss research-in-progress, new research ideas and proposals, responses to peer review, collaborations and funding, and career development – as well as to be inspired and energized by each other in an informal setting
- We also hold special events and co-sponsor seminars with other research programs

Mentored Research Opportunities

- Individualized mentoring by Center faculty
- Participation in research team meetings
- Opportunities to:
 - Participate in community engagement activities
 - Contribute to study materials and protocols
 - Interview patients, clinicians, other healthcare staff, and community members
 - Collect anthropometric measures and other medical tests
 - Analyze qualitative and quantitative data
 - Contribute to scientific presentations and manuscripts



The personal side of research - an insightful podcast on mentor/mentee experiences. In 'What Makes a Mentor?' @JHhealthequity colleagues @ycommodore + @Alvarez11C talk with @LisaCooperMD. Thx @JHUNursing for shining light on these valuable relationships. bit.ly/2mCRBb7



Health Equity Courses for Academic Credit



- Courses through the Bloomberg School of Public Health available for the 2023-2024 academic year
 - **Third Term:** Local and Global Best Practices in Health Equity Research Methods (410.635.81)
 - Co-instructors: Lisa Cooper, MD, MPH and Bunmi Ogungbe, PhD, MPH, BNSC, RN
 - **Fourth Term:** Health Equity Research Methods to Address Social Determinants of Health (340.667.81)
 - Instructor: Tanjala Purnell, PhD, MPH

Massive Open Online Courses (MOOCs)

- We have had over 7,000 learners sign up for our three MOOCs:
 - [Foundations of Health Equity Research](https://www.coursera.org/learn/health-equity-research)
 - [Application of Health Equity Research Methods for Practice and Policy](#)
 - [Health Equity Research & Practice: Local and Global Lessons](#)



Community Engagement Activities



MACCHE Investigator Development Core

- Housed within CHE, the Mid-Atlantic Center for Cardiometabolic Health Equity (MACCHE) established a pilot project program in 2022 to support innovative research related to cardiometabolic health equity
- The program – consisting of Early-Stage Investigators – includes a built-in community network, faculty mentoring, and structured didactic training to support awardees
- Two cohorts of scholars have been funded, the next application cycle will be in Spring 2024



How Do I Become a CHE Trainee?

Follow the QR Code below to take our Trainee Interest Survey!



- Your confidential survey will tell us about you and your primary content and methodological areas of interest
- We will try our best to match you with an appropriate faculty mentor, research study group and/or community-based experience
- For further questions and inquiry, please email us at: heathequitytraining@jhmi.edu or visit [our website](#).



JOHNS HOPKINS
CENTER *for* HEALTH EQUITY

THANKS!

Learn more. Stay connected.



<https://publichealth.jhu.edu/center-for-health-equity>

Center for Immersive Learning and Digital Innovation

nursing.jhu.edu/cildi

**CENTER FOR IMMERSIVE LEARNING
AND DIGITAL INNOVATION**

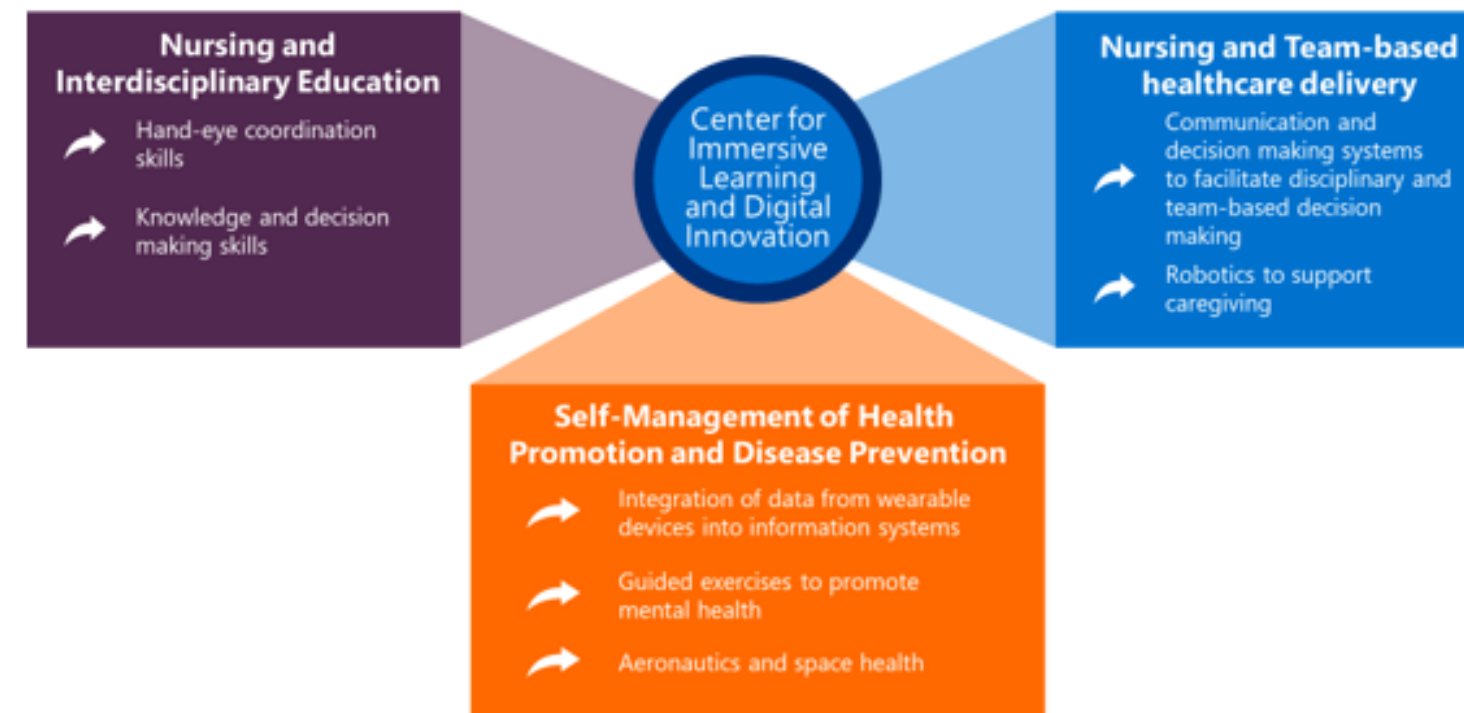
Mission

The center for Immersive Learning and Digital Innovation at the Johns Hopkins School of Nursing will foster the development of an internationally recognized immersive learning and digital innovation ecosystem, leveraging technology to enhance the overall mission of the Johns Hopkins University School of Nursing.

Vision

Our vision is to be a global leader in innovative simulation, virtual and augmented reality, and artificial intelligence-enabled solutions to advance *nursing and interdisciplinary education and healthcare delivery* to promote patient safety.

3 Domains of Innovation



To learn more about the research potentials within CILDI, please go to <https://nursing.jhu.edu/excellence/quality-safety/technology/cildi/index.html>

To utilize equipment, manpower, and space for your research, please fill out the request forms at <https://nursing.jhu.edu/excellence/quality-safety/technology/cildi/cildi-request-forms.html>

The pricing model for faculty/student-led research activity is available at <https://nursing.jhu.edu/excellence/quality-safety/technology/cildi/documents/JHSON-CILDI-A-LA-CARTE-RATES-FY23.pdf>

Do not forget to indicate your request to use CILDI resources in your intent to submit application through NORA.

Center for Infectious Disease and Nursing Innovation

CIDNI.org

Clinical Translational Laboratory

PRECEDE Biomarkers Laboratory

Promoting Resilience through Emerging Clinical and
Evolving Determinants of Equity

Director of the Clinical Translational Laboratory:

Chelsea Wagner, MS

chelseawagner@jhu.edu

(410) 502-6078

Principal Investigators:

Dr. Jessica Gill

Dr. Jennifer Wenzel

Dr. Cheryl Himmelfarb

Dr. Nada Lukkahatai

Dr. Junxin Li

Dr. Melissa deCardi Hladek

Dr. Martha Abshire Saylor

Dr. Jason Farley

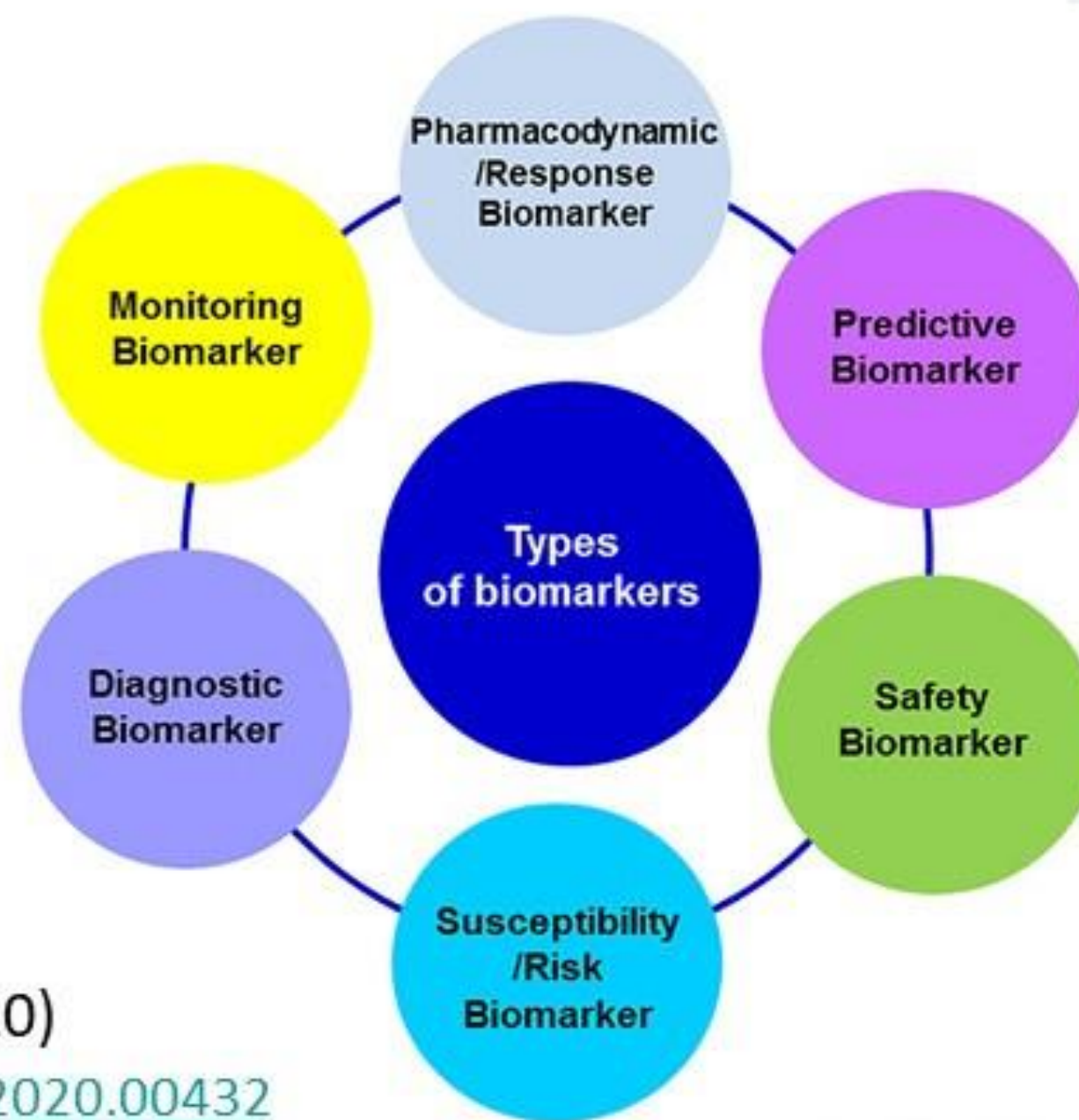
Dr. Yeabsira Tufa



The picture cannot be displayed.

What are biomarkers?

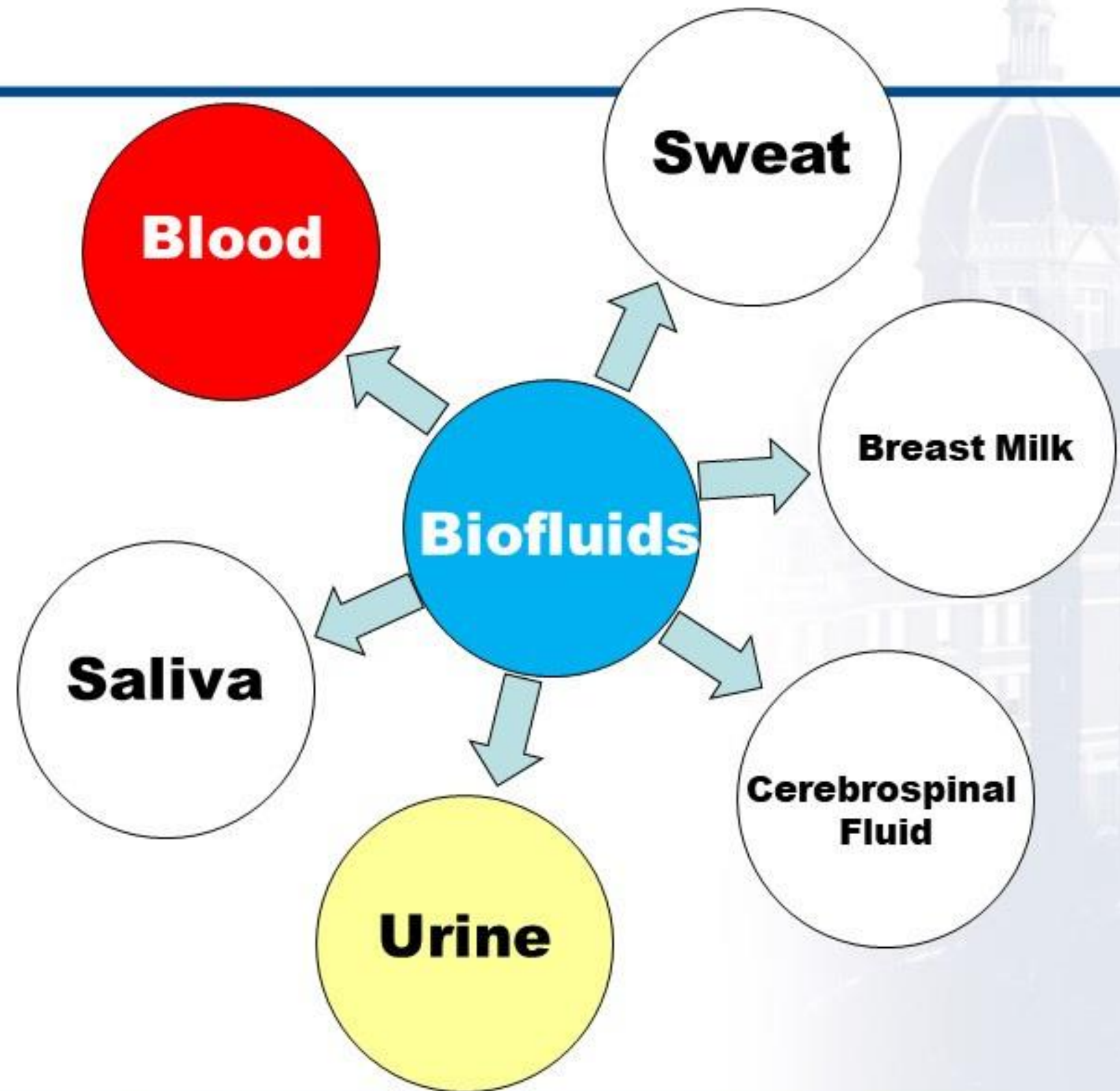
- Biomarkers: A defined characteristic that is measured as an indicator of normal biological process, pathogenic process or response to an exposure or intervention (FDA-NIH Biomarker Working Group)



(García-Gutiérrez et al., 2020)

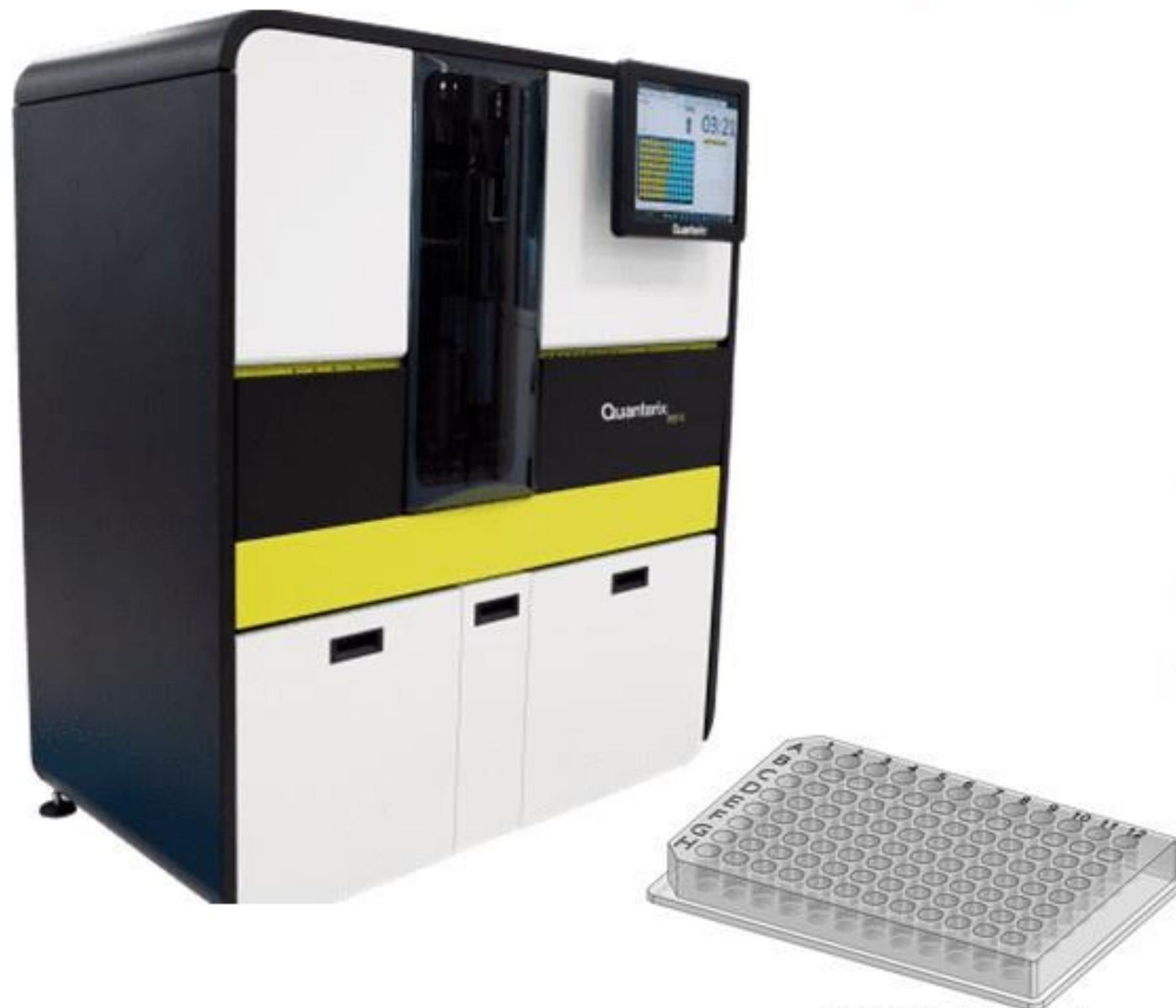
<https://doi.org/10.3389/fpsy.2020.00432>

What can we measure?



Protein Quantification Instruments

Quanterix HD-X™ Automated Immunoassay Analyzer



96 Well Plate

Simoa HD-X Benefits

Ultra-sensitivity – Up to 1000x greater sensitivity than traditional immunoassays

Automation – Reproducibility and convenience of sample->answer workflow

Multiplexing – Measure up to 6 biomarkers in single sample at fg/ml concentrations

Flexibility – Supports both high-throughput and rapid result workflows

Efficiency – Precise control of assay conditions allows for use of stored assay calibration values

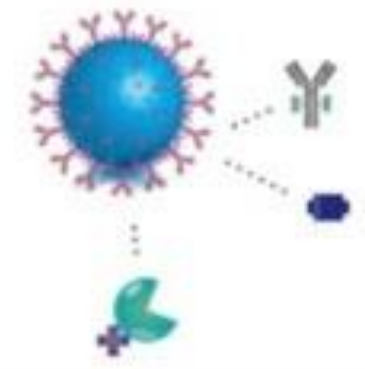
Menu – Fully compatible with 80+ assays also available on HD-1 as well as customized homebrew assays

Regulatory Compliance – Enables 21CFR Part 11 compliance with streamlined run reports and user management

Quanterix HD-X™ Automated Immunoassay Analyzer Process

1

Paramagnetic particles coupled with antibodies designed to bind to specific targets are added to the sample.



2

Detection antibodies – capable of generating fluorescent product – are added.



3

The objective is to form an immunocomplex consisting of the bead, bound protein, and detection antibody.



4

At low concentrations, each bead will contain one bound protein, or none.



Quanterix HD-X™ Automated Immunoassay Analyzer Process

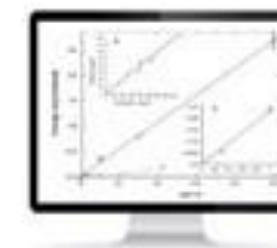
5

The sample is loaded into arrays, in the Simoa disc, consisting of more than 200,000 microwells – each large enough to hold one bead.



7

Data analysis – results can be viewed and analyzed on the board or exported to commonly used software packages or LIMS systems.



6

Enzymatic signal amplification with fluorescent substrate, fluorescence imaging and data reduction.



Protein Quantification Instruments

- Ultra-sensitive assay with up to 10-plex multiplexing scale and flexibility

SP-X Imaging and Analysis System™

Unleashing the power of next-generation Simoa® Planar Array technology for robust multiplex biomarker detection – even at healthy baseline levels.

1000x

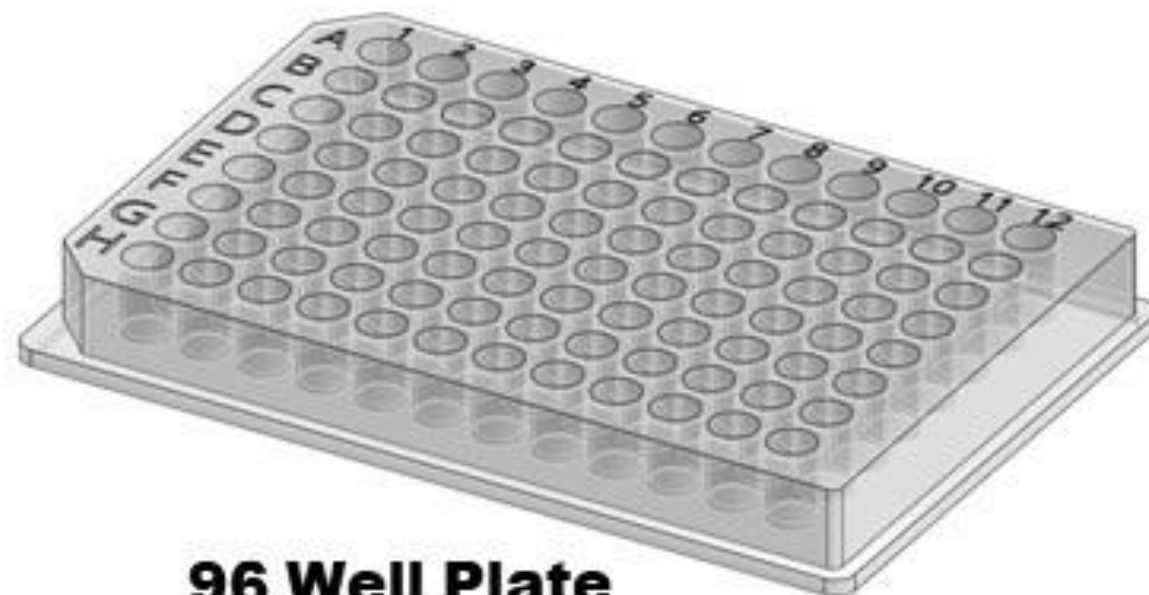
Up to 1000x greater sensitivity

10 in 1

Up to 10 biomarkers in a single assay

100+

Compatible with 100+ assays



96 Well Plate



1

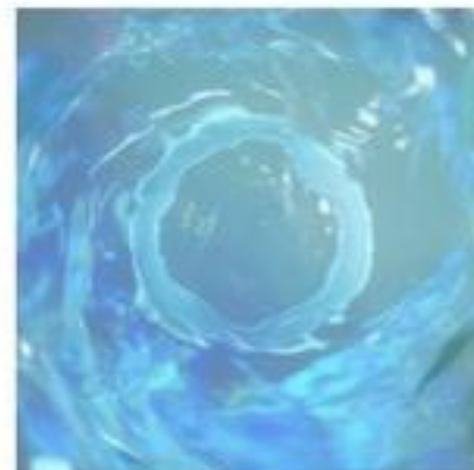
96-well plates are spotted at the factory with the target analyte(s) of interest



Quanterix SP-X™ Automated Immunoassay Analyzer Process

2

Diluted samples and standards added to each well and the plates are to create a unique surface chemistry and “vortex” effect



3

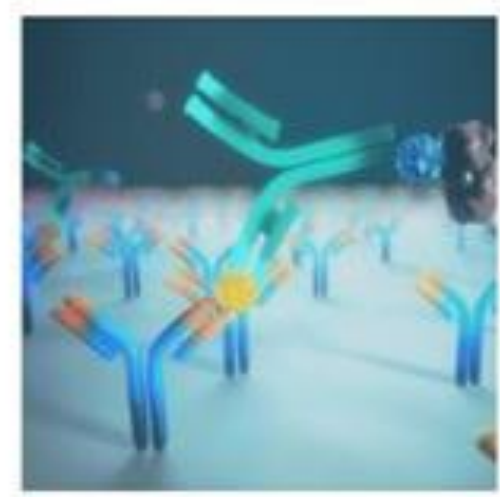
Biotinylated detection antibodies are added to form the other half of the immunocomplex “sandwich”



Quanterix SP-X™ Automated Immunoassay Analyzer Process

4

High sensitivity HRP enzyme-conjugated streptavidin is added in between additional shake cycles.



5

Finally, a chemiluminescent substrate is added just prior to ultra-sensitive CCD camera imaging, in order to measure the signal intensity produced by each spot.



Protein Quantification Instruments

Utilizes a very sensitive, high-resolution CCD camera and lens system to detect light emitted from MULTI-ARRAY® and MULTI-SPOT® plates.

The custom-designed lens enables highly efficient and uniform collection of electrochemiluminescence (ECL) generated light.

Broad Assay Menu

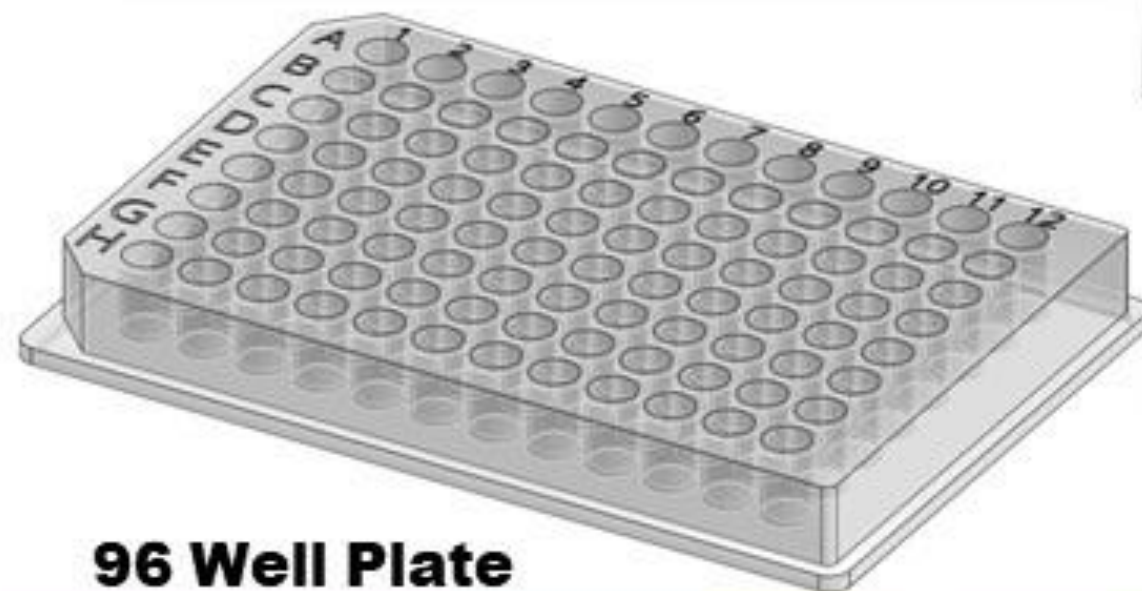
- Large menu of commercially available kits
- Full line of components for user-developed assays
- Access to all product lines for MSD® consumables

Flexibility

- Single and multiplex assays
- Compatible with all SECTOR™ and QuickPlex® products
- Special pricing for academic customers

Validated

- Developed under design control
- Microsoft Windows 10 compatible
- Simple, fast, and secure data analysis with DISCOVERY WORKBENCH® software



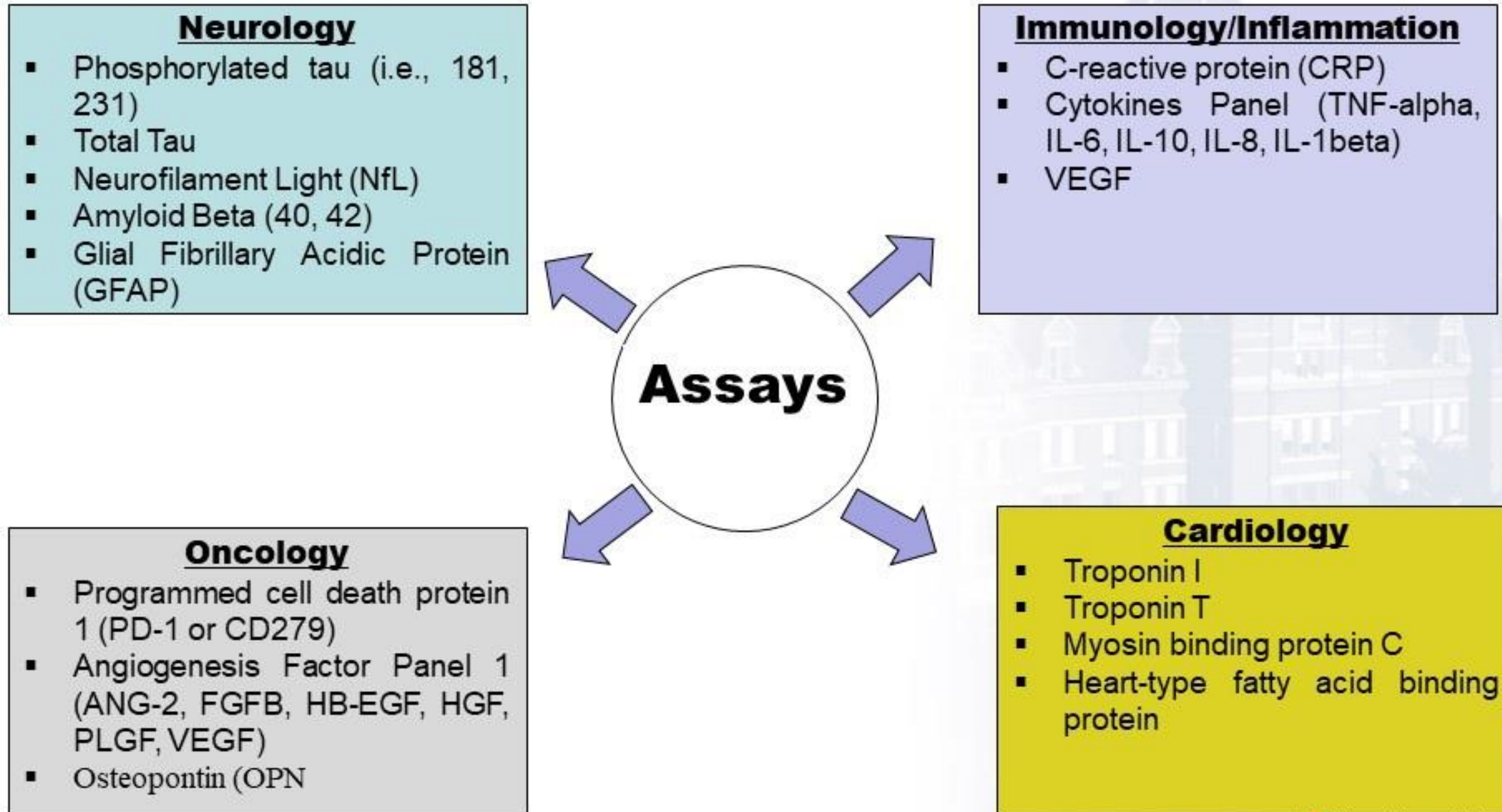
96 Well Plate



MESO QuickPlex SQ 120MM
Meso Scale Discovery Technology

✘ The picture can't b...

What can we measure?

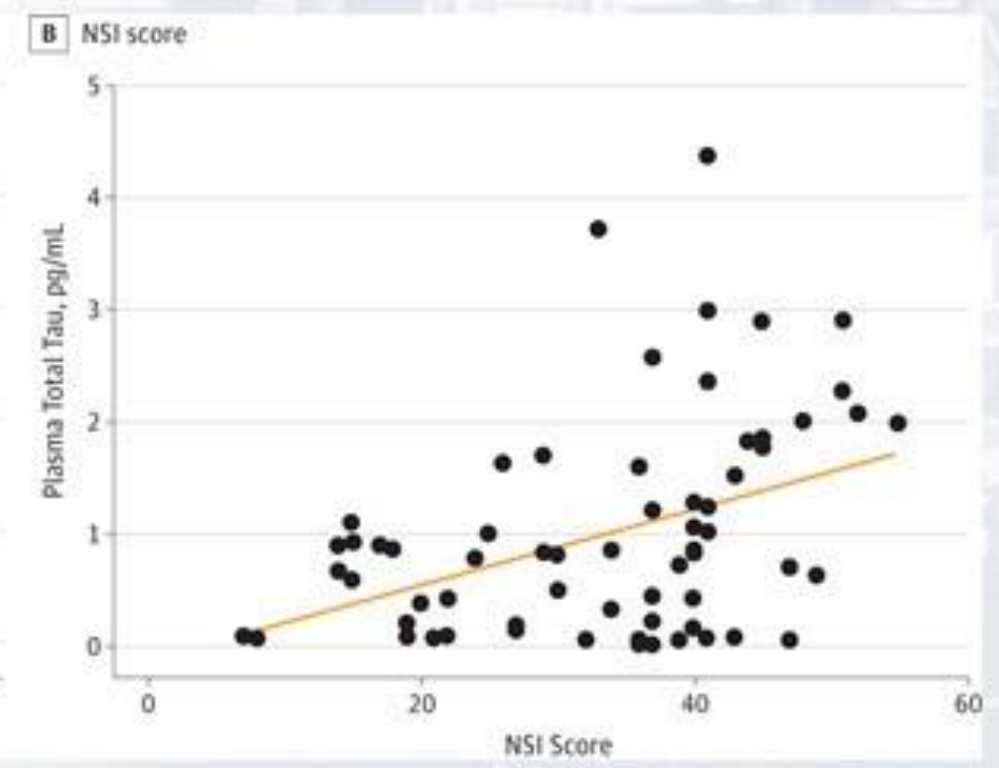
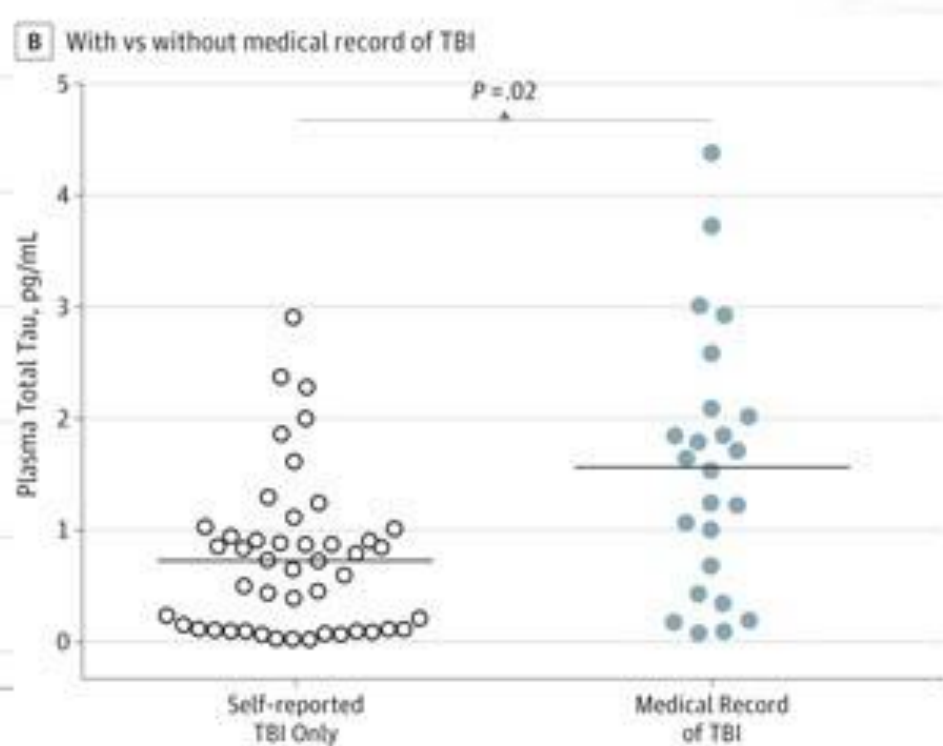
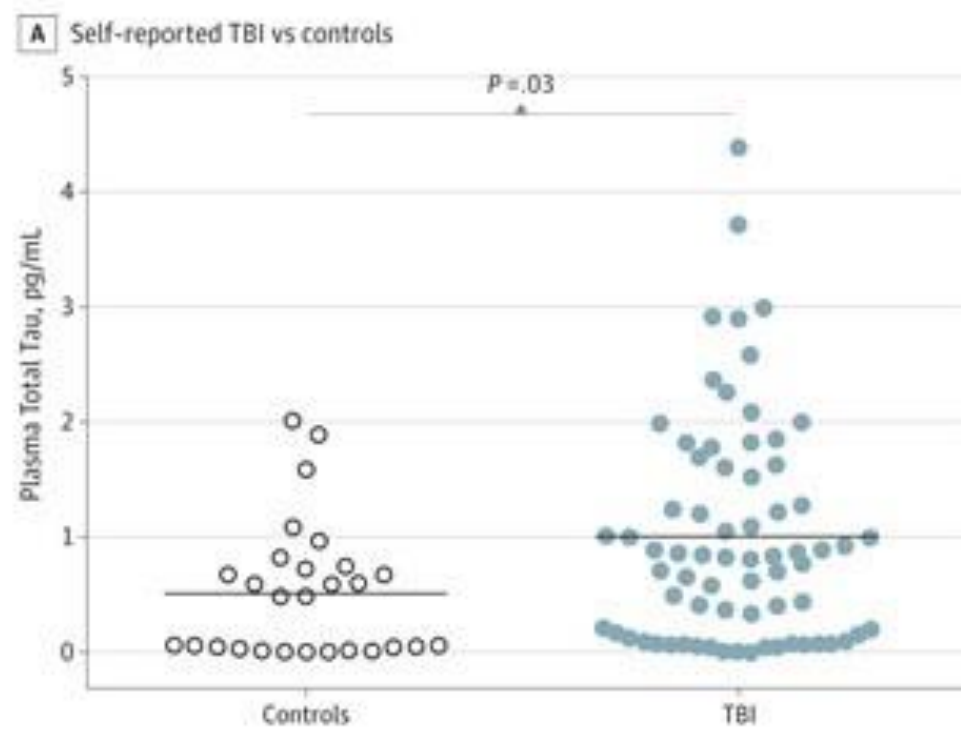


Scientific Publications

Original Investigation

Peripheral Total Tau in Military Personnel Who Sustain Traumatic Brain Injuries During Deployment

Anlys Olivera, PhD; Natasha Lejbman, BS; Andreas Jeromin, PhD; Louis M. French, PsyD; Hyung-Suk Kim, PhD; Ann Cashion, PhD; Vincent Mysliwicz, MD; Ramon Diaz-Arrastia, MD, PhD; Jessica Gill, RN, PhD



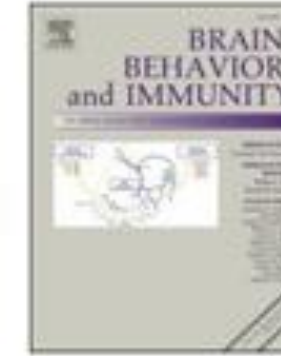
Postconcussive Disorder Symptoms

The picture can't b...



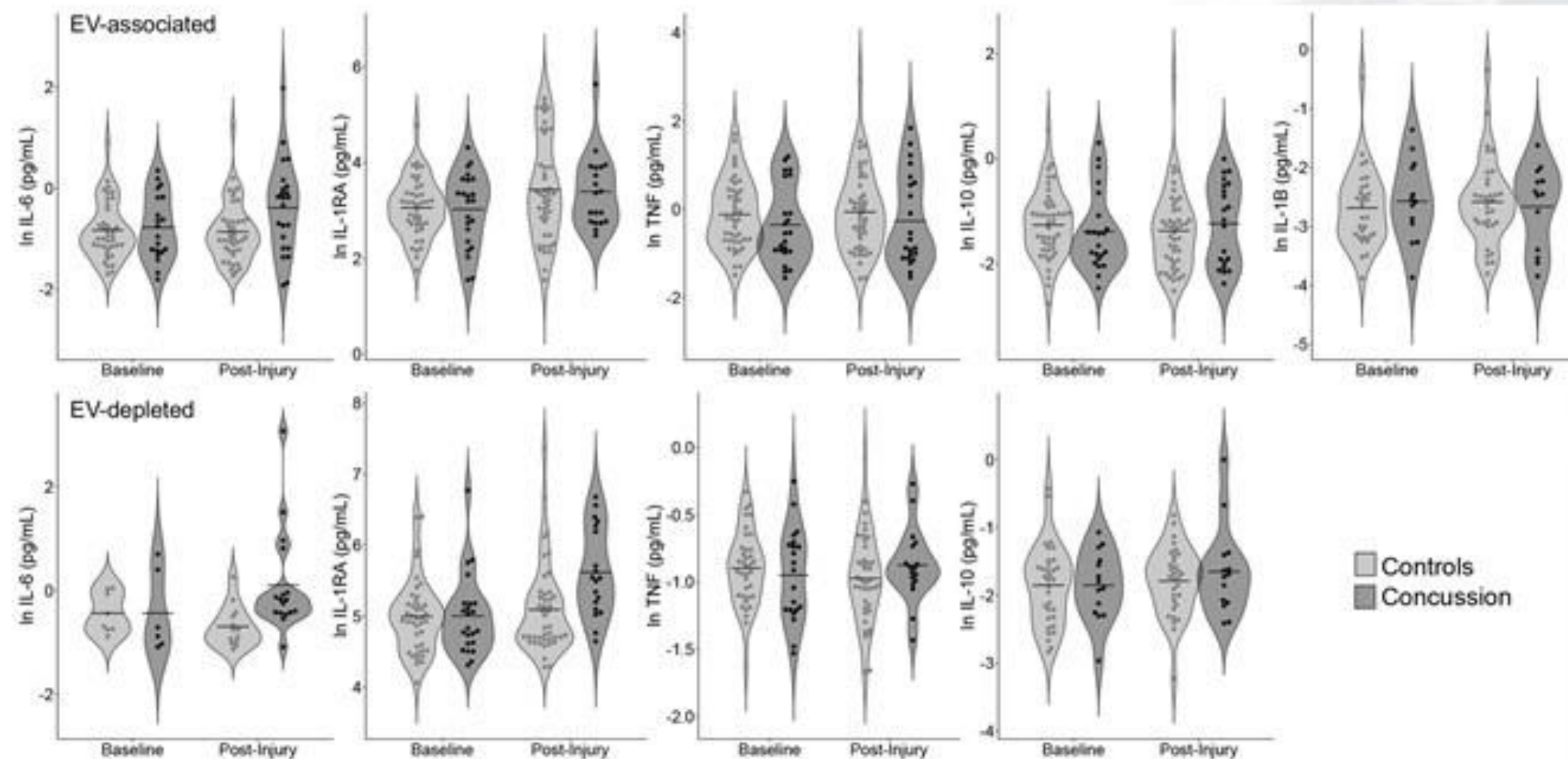
Contents lists available at ScienceDirect

Brain Behavior and Immunity

journal homepage: www.elsevier.com/locate/ybrbi

Extracellular vesicle-associated cytokines in sport-related concussion

Timothy B. Meier^{a,b,c,1,*}, Vivian A. Guedes^{d,1}, Ethan G. Smith^d, Dilorom Sass^d, Sara Mithani^d, Rany Vorn^d, Jonathan Savitz^{e,f}, T. Kent Teague^{g,h,i}, Michael A. McCrea^{a,j}, Jessica M. Gill^d



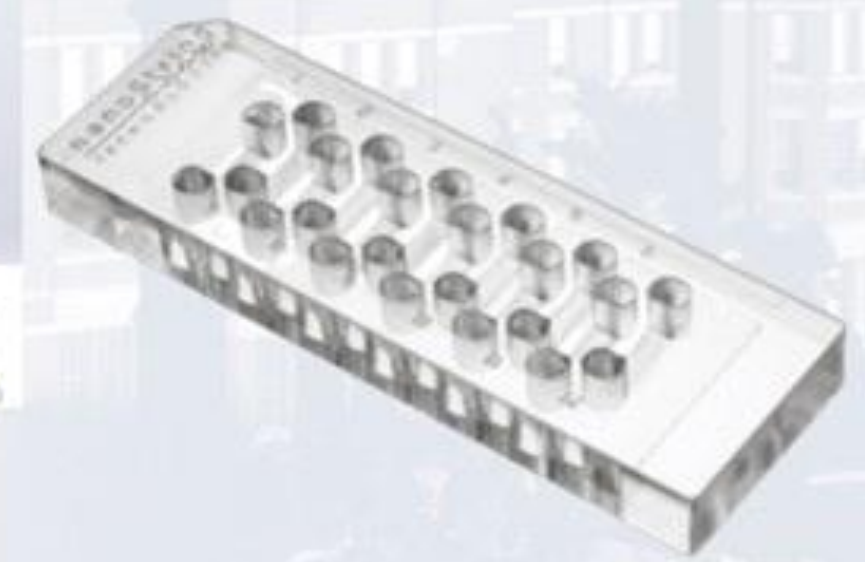
Nucleic Acid Quantification Instruments

nCounter Pro Analysis System



nanosttring.com

FOR RESEARCH USE ONLY. NOT FOR USE IN DIAGNOSTIC PROCEDURES.



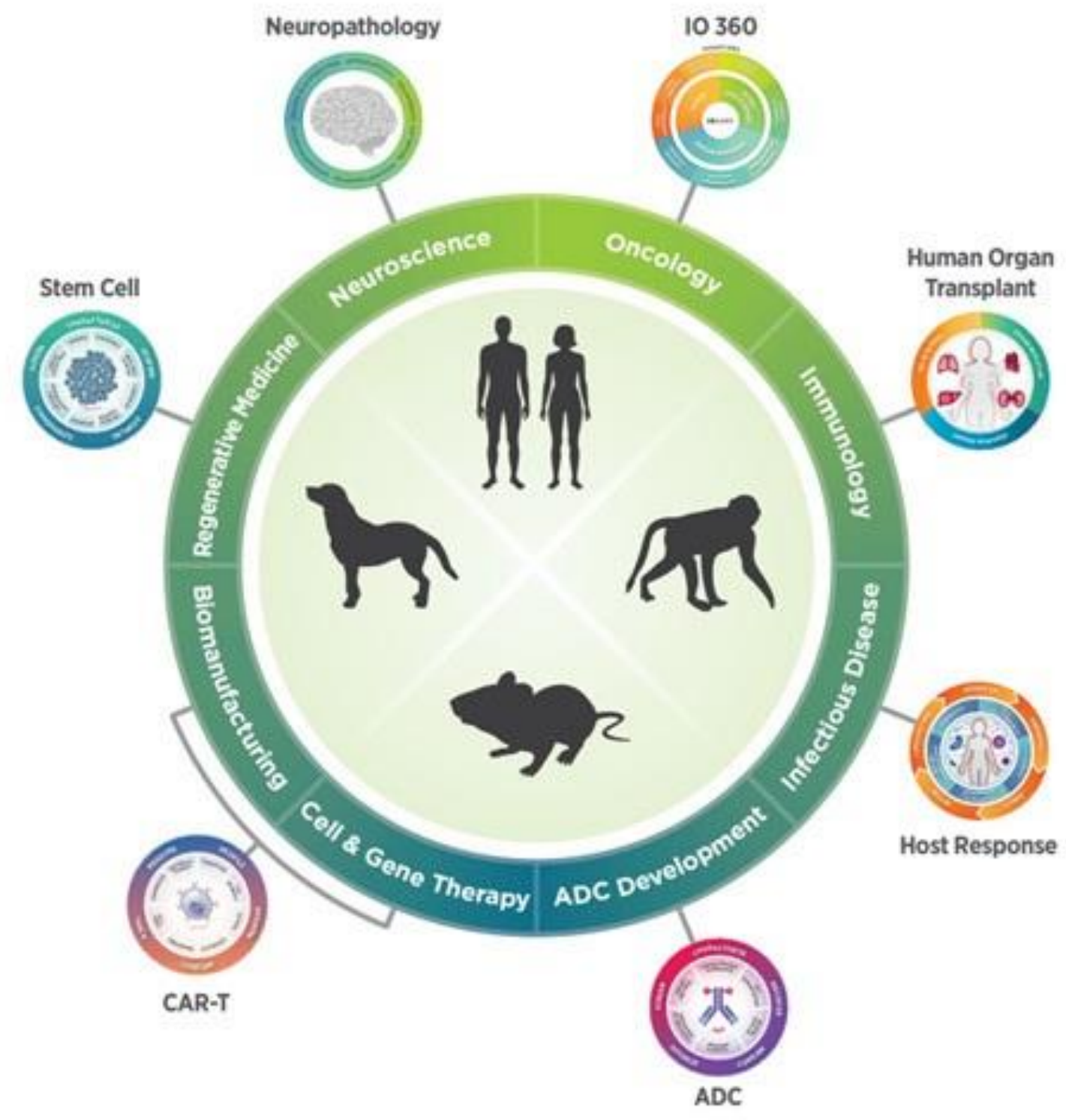
800+ targets (messenger RNA and microRNA)

12 samples per cartridge

The picture can't b...

Nucleic Acid Quantification Instruments

Panel Selection





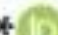
12 samples per cartridge

✘ The picture can't b...



Article

Exosomal microRNA Differential Expression in Plasma of Young Adults with Chronic Mild Traumatic Brain Injury and Healthy Control

Rany Vorn ¹ , Maiko Suarez ², Jacob C. White ³, Carina A. Martin ¹ , Hyung-Suk Kim ¹, Chen Lai ¹, Si-Jung Yun ⁴, Jessica M. Gill ^{5,6} and Hyunhwa Lee ^{7,*} 

¹ National Institute of Nursing Research, National Institutes of Health, Bethesda, MD 20814, USA; rany.vorn@nih.gov (R.V.); carina.martin@nih.gov (C.A.M.); kimhy@mail.nih.gov (H.-S.K.); laichi@mail.nih.gov (C.L.)

² School of Medicine, University of Nevada, Las Vegas, NV 89102, USA; suarem2@unlv.nevada.edu

³ College of Liberal Arts, University of Nevada, Las Vegas, NV 89154, USA; whitej31@unlv.nevada.edu

⁴ Yotta Biomed, LLC, Bethesda, MD 20817, USA; sijungyun@yottabiomed.com

⁵ School of Nursing and Medicine, Johns Hopkins University, Baltimore, MD 21205, USA; JessicaGill@jhu.edu

⁶ Center for Neuroscience and Regenerative Medicine, Uniformed Services University of the Health Science, Bethesda, MD 20814, USA

⁷ School of Nursing, University of Nevada, Las Vegas, NV 89154, USA

* Correspondence: hyunhwa.lee@unlv.edu



Extracellular Vesicle Proteins and MicroRNAs Are Linked to Chronic Post-Traumatic Stress Disorder Symptoms in Service Members and Veterans With Mild Traumatic Brain Injury

Vivian A. Guedes¹, Chen Lai¹, Christina Devoto^{1,2}, Katie A. Edwards¹, Sara Mithani¹, Dilorom Sass¹, Rany Vorn¹, Bao-Xi Qu^{1,3}, Heather L. Rusch^{1,2,4}, Carina A. Martin¹, William C. Walker⁵, Elisabeth A. Wilde⁶, Ramon Diaz-Arrastia⁷, Jessica M. Gill^{8,9} and Kimbra Kenney^{8,10*}

OPEN ACCESS

Edited by:

Stefania Mondello,
University of Messina, Italy

Reviewed by:

Eric Peter Thelin,
Karolinska Institutet (KI), Sweden
Ralph George Depalma,
United States Department of Veterans
Affairs, United States

¹Tissue Injury Branch, National Institutes of Nursing Research, National Institutes of Health, Bethesda, MD, United States, ²Center for Neuroscience and Regenerative Medicine, Uniformed Services University, Bethesda, MD, United States, ³Center for Neuroscience and Rehabilitation Medicine, Uniformed Services University of the Health Sciences and National Institutes of Health, Bethesda, MD, United States, ⁴Henry M. Jackson Foundation for the Advancement of Military Medicine, Bethesda, MD, United States, ⁵Department of Physical Medicine and Rehabilitation, Virginia Commonwealth University, Richmond, VA, United States, ⁶CENC Neuroimaging Core, George E. Wahlen VA Salt Lake City Healthcare System and Traumatic Brain Injury and Concussion Center, Department of Neurology, University of Utah, Salt Lake City, UT, United States, ⁷Department of Neurology, University of Pennsylvania Perelman School of Medicine, Philadelphia, PA, United States, ⁸CENC Biorepository, Uniformed Services University of the Health Sciences, Bethesda, MD, United States, ⁹Johns Hopkins University School of Nursing and Medicine, Baltimore, MD, United States, ¹⁰Department of Neurology, Uniformed Services University of the Health Sciences,

Questions?



✘ The picture can't b...

COMPASS Center

nursing.jhu.edu/COMPASS



Center for Community Programs, Innovation, and Scholarship (COMPASS)

Hae-Ra Han, PhD, MSN, RN, FAAN

Professor & Elsie M. Lawler Endowed Chair

Associate Dean for Community Programs and Initiatives

D. Layne Humphrey, MEd.

COMPASS Center Manager



Vision:

To promote health and wellness, and reduce health inequities among low-income, uninsured or underinsured populations in Maryland.

Mission:

To create, implement, and evaluate programs that involve faculty and students in nurse-led community care, service-learning, research, scholarship and advocacy in collaboration with the community and other stakeholders including Johns Hopkins Medical Institutions, Johns Hopkins University entities, community-based organizations, business leaders, and health care organizations.

Values:

Diversity, Integrity, Accountability, Respect, Excellence

Health Equity Primary Area of Focus/Target Populations:

Social determinants of health, mental health, chronic care, wellness, health literacy
Residents in Maryland/Underserved populations

For more information visit: <https://nursing.jhu.edu/excellence/community/center-community-innovation-scholarship.html>





Faculty and Staff Leadership





HAE-RA HAN

PHD, MSN, RN
FAAN
Professor

Associate Dean for
Community Programs
and Initiatives

Elsie M. Lawler Endowed Chair



PATTY WILSON

PHD, MSN, RN
PMHNP-BC
Assistant Professor



LAURA LUCAS

DNP, MS, RN
APRN-CNS, RNC-OB, C-EFM
Assistant Professor

Associate Director for
Clinical Practice, MSN
(Entry into Nursing)
Program



CATHERINE LING

PHD, FNP-BC
CNE, FAANP, FAAN
Associate Professor



NADA LUKKAHATAI

PHD, MSN, RN
FAAN
Assistant Professor

Director of the MSN
(Entry into Nursing)
Research Honors Program



TAMAR RODNEY

PHD, MSN, RN
PMHNP-BC, CNE
Assistant Professor

DNP Advanced Practice Psych
Mental Health Track Coordinator



DENISE ROSADO

BS

Administrative Coordinator



LAYNE HUMPHREY

MSEd

Center Manager



ANUSHKA JAJODIA

MA

Social Designer



VERONICA LEE

BSN, RN

Community Fellow



OPHELIA DAPAAH-GYIMAH

FNP-BC, RN

Community Fellow

Examples of Ongoing Projects

- **Project 1:** Passport2Freedom (PI—Dr. Patty Wilson)
Target population—Women and children in transitional housing
Summary—Intervention to deliver and test a model of mindfulness and stress management in the target population
- **Project 2:** Ask-A-Nurse (PI—Dr. Catherine Ling)
Target population—Adults 18+ years with limited access to care
Summary—Development and testing of a wrap-around case management program to address social determinants and chronic care
- **Project 3:** Nurse-led Reimbursable Care Model (Dr. Tamar Rodney)

Community Engagement Opportunities

- **Partnering Community Based Organizations:**
 - [SOURCE](#)
 - [ICTR](#)
 - [Day at the Market](#)
 - [House of Ruth Maryland](#), etc.
- **Examples of Service-Learning Experiences:**
 - Community Flu Vaccine Clinics ('20,'21) – Day at the Market @NorthEast Market, Henderson-Hopkins School, Isaiah Baptist Church
- **Desired Skillsets or Other Requirements:**
 - Prefer students pursuing a degree in health-related fields

For more information visit: <https://nursing.jhu.edu/excellence/community/center-community-innovation-scholarship.html>

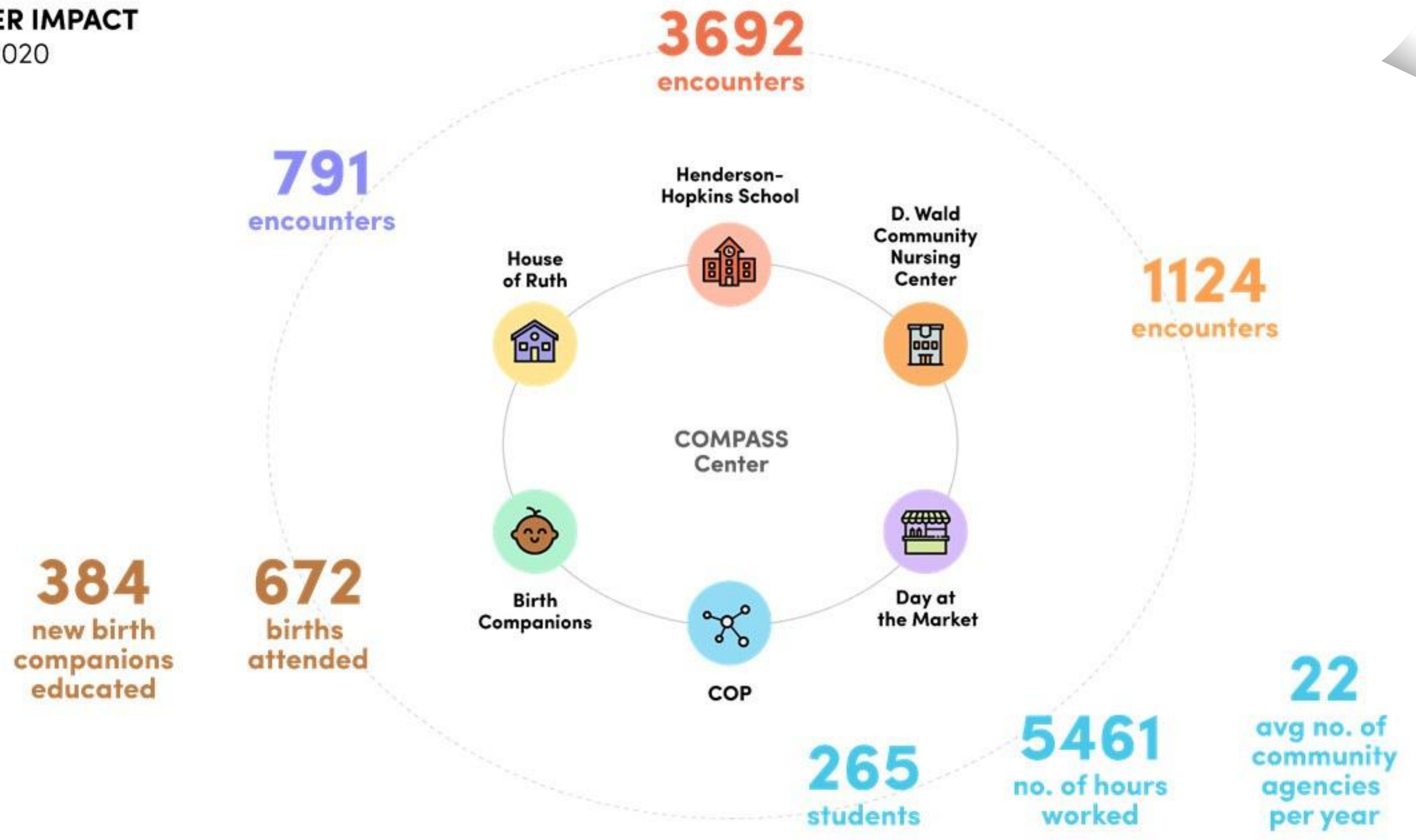


Serving East Baltimore since 1994

To learn more, follow us on twitter! @JHUSON_COMPASS

CENTER IMPACT

2016-2020





JOHNS HOPKINS

SCHOOL *of* NURSING

Leading the way in education, research and practice – locally and globally.

RESILIENCE Center

nursing.jhu.edu/resilienceRRTC



JOHNS HOPKINS
SCHOOL *of* NURSING

THE RESILIENCE CENTER

Research and Education to Support the Science of
Independent Living for Inclusion and Engagement





Our Mission

Improve the health and function of people with disabilities and their caregivers by adapting and scaling two award winning evidence-based programs for children and older adults with disabilities (Chicago Parent Program and CAPABLE)



Design new approaches using key attributes of effective and sustainable programs to ensure program effectiveness, relevance, utility, and scalability.



Our Team



Dr. Sarah Szanton
Founding Director



Dr. Janiece Taylor
Deputy Director



Brian Fitzek
Knowledge Translation
Specialist



Dr. Wonkyung Jung
Postdoctoral Fellow



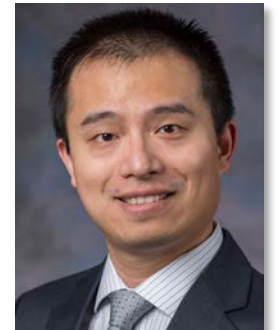
Dr. Deborah Gross
Director



Alicia Cooke
Center Program
Coordinator



Kennedy McDaniel
Design Strategy Manager



Dr. Jiabin Shen
Center Scholar



Our Research: Across the Life Course



Chicago Parent Program Individualized for Families (CPPi)
July 2021 – July 2024



Designed With You
July 2022 – July 2024



CAPABLE with Primary Care
July 2023 – July 2025



CAPABLE Kids
July 2022 – July 2024



CAPABLE Family
July 2020 – July 2023

CAPABLE Care Partner
July 2020 – July 2025



Our Research: Our Approach

CENTER APPROACH

In designing ways for people with disabilities and their caregivers to fully participate in the community, this Center utilizes the **Society to Cells Resilience Framework** and **Human-Centered Design** to build on inherent strengths rather than only addressing deficits and stressors.

SOCIETY TO CELLS RESILIENCE FRAMEWORK

This framework (Szanton & Gill, 2010) posits that society, community, family, and individual factors can promote resilience. Families and communities can develop increased capacity through a particular challenge or life situation (such as caregiving) that they can later generalize and apply in other situations.

HUMAN-CENTERED DESIGN

Human-centered design mindsets and methods are used throughout the research projects lifecycle and to build sustainability into the outputs. Human-centered design is explicitly based on the premise that lived experience is a valuable form of expertise and therefore, people who have direct experience with a disability or health condition and its broader impact on daily life should play a decision-making role in the design of services, products, and approaches to improve their health and wellbeing.



Our Outreach: Built to Scale

seminar series

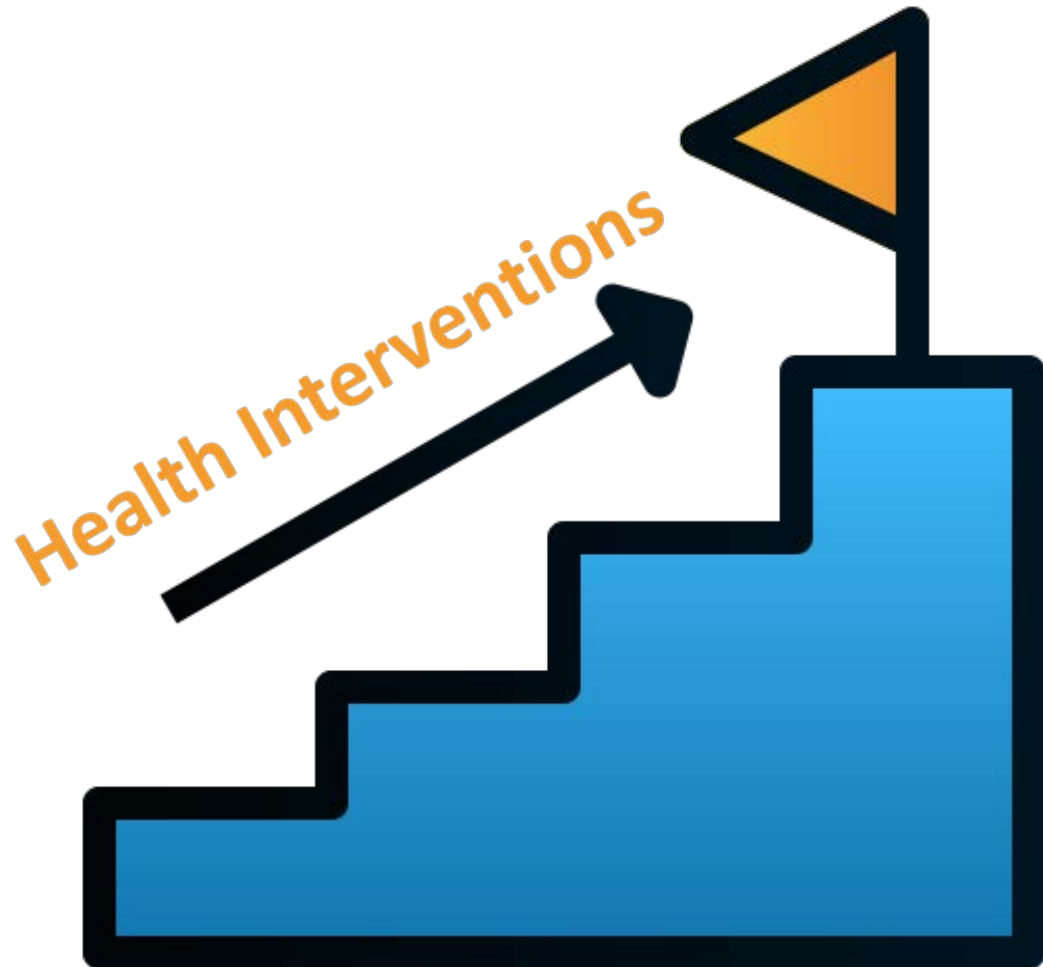


Built to Scale series explores challenges and successes in scaling evidence-based health interventions for maximum impact.

Sessions brings participants into conversation with leaders in the field, drawing on their experience to gain inspiration and guidance for scaling programs for maximum impact.



Our Outreach: Building for Scale Scholars



Program Highlights

Six month program for researchers in the early stages of designing/adapting an innovation or intervention that meet the needs of individuals and families in the disability community.

Scholars participate in intensive learning experiences, including customer discovery and human-centered design.



Stay Connected with Us



Website:

<https://nursing.jhu.edu/excellence/mental-health/resilience-rrtc/>



Email:

SON-RESLIENCECenter@jhu.edu



NORA Resources

Human-Centered Design

Schedule your HCD Consultation today!



calendly.com/kennedymcd

Human-Centered Design

Human-Centered Design (HCD) is a creative and collaborative process used to understand and define problems, identify opportunities, generate ideas, and design interventions that support change.

HCD starts with the people you're designing for and ends with new solutions tailored to meet their needs. We center people with lived throughout the design process and view their lived experience as expertise!

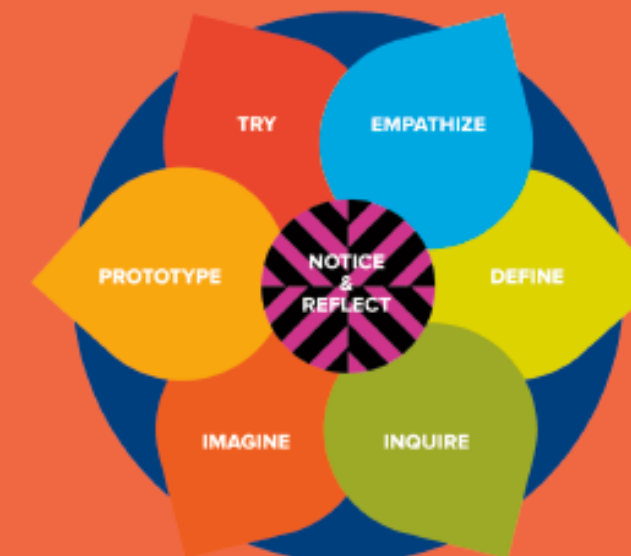


Image Source: National Equity Project

WHY USE HCD?

- To build empathy among research team
- To increase equity, inclusion, and opportunities for co-creation in research
- To find deeper insights and innovative solutions

Here's how we can support your research:

- 1-on-1 HCD consultations
- Design strategy and support for research projects
- HCD workshops for research teams
- HCD templates and resources

Let's Connect!

If you're interested in learning more about HCD and how to use it in your research, please contact our Design Strategy Manager, Kennedy McDaniel:

 KMCDANI4@JHU.EDU

Biostatistics and Methods Core

https://nursing.jhu.edu/faculty_research/research/nora/biostatistics.html



Biostatistics and Methods Core

NORA

- Nancy Perrin, Outgoing Director
 - Longitudinal data analysis
 - Quasi-experimental design and analyses
 - Psychometrics

- Subhash Aryal, Incoming Director
 - Sample size calculation
 - Zero-inflated data/Hierarchical models
 - Multivariate Analysis
 - Prediction and Tolerance Intervals



- **Chakra Budhathoki, Faculty**
 - Randomized Controlled Trials
 - Meta-analysis
 - Mixed modeling

- **Ginger Hanson, Faculty**
 - Multilevel regression
 - Factor analysis
 - Cluster analysis
 - Social network analysis





- Eric Slade, Faculty
 - Administrative data analysis
 - Causal inference using observational data
 - Cost-benefit and cost-effectiveness analysis



- Wura Olawole, Research Analyst
 - Data management
 - Descriptive analysis
 - Inferential analyses: Regression and classification modeling

Grant Proposals

- Align aims, methods, and analyses
- Conduct preliminary studies analyses, if needed
- Conduct power analyses
- Write the analysis section of proposals
- Review the budget to ensure support for data management, data cleaning, and analyses
- Expectation is that the Biostatistics Core faculty member will be included as a Co-Investigator

Manuscripts and Presentations (based on unfunded requests)

- Basic consultation on analysis approach
- Work is assigned to a Biostatistics Core member based on interest, expertise, and workload
- Analysis support by research analyst if funds identified for a limited scope of work
- Attend a data analysis workshop



Data Analysis Workshop

- Multi-day workshop for people who are ready to start data analysis
- Each person is assigned to work with a biostatistician to help them conduct the analyses during the workshop

PhD Proposal/NRSA

- Each student is assigned a Biostatistics Core member to work with on the proposal
- The Student, Advisor, and Biostatistician will reach agreed upon aims, research design, and analysis plan
- Help with power analyses, writing of the analysis section
- Please start working with biostatistician at least 45 days prior to the submission date



Dissertation Analysis Support

- Student should participate in the data management training prior to working on their analyses (available online)
- Dissertation Data Analysis Clinic
- Basic consultation with biostatistician or research analyst



Dissertation Data Analysis Clinic

- Drop-in clinic
- Help with programming (STATA, R, SPSS, SAS)
- Help with interpretation of results
- Build community with other students as they work on data analyses

Data management and post award support

- Usually there is a Biostatistics Co-Investigator on the grant that leads the analysis
 - If none then basic consultation
- Also need trained research analyst to join the team
 - Biostatistics Core can help identify people to hire on the grant



Biostatisticians' Goals When Working with You

- Enhance the integrity and validity of your study
- Work with you to ensure the design has strong internal validity, and if possible, external validity
 - Specific aims
 - Measurement quality
 - Sampling plan
 - Randomization procedures
 - Data management
 - Statistical power
 - Appropriate analyses
- This means we have to have a very good understanding of your study

Start Working with Us Early and Always!

- Early in proposal development stage is the best
- Studies have problems, that is okay
 - Definitely consult with a statistician before making changes and hoping for the best
 - If a biostatistician is an active collaborator on the project, they can sometimes see trouble ahead and help to prevent or alleviate it

Research Design and Analysis Seminars

- Monthly seminars
 - Data management
 - Mediators and Moderators
 - Adaptive Trials
 - Pragmatic Trials
 - Cluster Randomized Trials
 - Observational Methods
 - Measurement
 - PROMIS measures
 - Multilevel modeling
 - Handling confounding
 - Predictive modeling
 - Meta-analysis
 - Secondary data analysis
 - Network analysis

If there is a topic you are interested in – let us know!



All seminars are recorded and available on demand on the Biostatistics and Methods Core web site

https://nursing.jhu.edu/faculty_research/research/nora/biostatistics.html



JOHNS HOPKINS

SCHOOL *of* NURSING

Leading the way in education, research and practice – locally and globally.

Nursing Office for Research Administration (NORA)

nursing.jhu.edu/NORA

Nursing Office for Research Administration (NORA)

Cheryl Himmelfarb, PhD, RN
Vice Dean for Research and
Sarah E. Allison Endowed Professor

Javonia Thomas
Associate Director



JOHNS HOPKINS
SCHOOL *of* NURSING

Research Key Functions

Research Administration and Monitoring

- SON Research Council
- Metrics (grants, publications, rankings)
- Research / Conflict of Interest / Outside Interest Compliance

Sponsored Projects Oversight

- Pre-award management
- Post-award management

Scholarship and Research Development

- Methods Core (Qual / Quan), editorial services
- Workshops, internal scientific review, speed aims review, retreats
- Faculty Interest Groups, Assist. / Assoc. Prof Dev Groups
- Internal grants program (DEL, Discovery & Innovation)

Integration of Research Across Programs

- Research Honors Program
- NRSA Bootcamp
- JHSON Research Grand Rounds Series

Internal and External Collaborations

- Key committees, centers and institutes across JHHS / JHU
- External presence / opportunities



Pre-Award Proposal Processing: Intent to Submit → Submission

8 Weeks

Prior to Sponsor
Due Date

- ✓ Complete Intent to Submit (ITS) Form
- ✓ Schedule Internal Scientific Review

6 Weeks

Prior to Sponsor
Due Date

- ✓ Meet with assigned Sr. GCA with prepared budget assumptions

4 Weeks

Prior to Sponsor Due Date

- ✓ Confirm consortium arrangements if applicable
- ✓ Complete Internal Scientific Review
- ✓ Submit Biosketches for Review

2 Weeks

Prior to Sponsor
Due Date

- ✓ Finalize budget and budget justification with Sr. GCA
- ✓ Final consortium documents due if applicable

5 Full Business Days

Prior to Sponsor
Due Date

- ✓ Submit all final documents to Sr. GCA
- ✓ 2 Full Business Days for Sr. GCA Review, 3 Full Business Days for JHURA Review
- ✓ PIs must be available for questions



The NORA Team SON-NORA@jhu.edu

Javonnia Thomas	Associate Director
Adrianna Dunnock	Sr. Grants & Contracts Analyst
Darrin Matthews	Sr. Grants & Contracts Analyst
Lori Dempsey	Sr. Grants & Contracts Analyst
Kristin Getz	Grants & Contracts Analyst
Joyclyn Gilmore	Grants & Contracts Manager
Ebony Norris	Budget Specialist
Christine Baltimore	Administrative Program Coordinator
Nancy Perrin	Director, Methods and Biostats Core
Chakra Budhathoki	Biostatistician Consultant
Ginger Hanson	Biostatistician Consultant
Wura Olawole	Data Analyst
Jennifer Wenzel	Qualitative Methods Consultant
Rebecca Wright	Qualitative Methods Consultant
Janiece Taylor	Qualitative Methods Consultant
Catherine Ling	Qualitative Methods Consultant
Kamila Alexander	Qualitative Methods Consultant
Allison Benner	Associate Dean, Finance and Administration
Cheryl Himmelfarb	Vice Dean, Research



Key Links to Access Resources and Services

[Intent to Submit](#)

[Editorial Consultation](#)

Graphics Design Support for Grant Applications

[Biostatistical and Qualitative Methods Consultation](#)

[Dorothy Evans Lyne Fund](#)

[Discovery and Innovation Fund](#)

[Institute for Clinical and Translational Research \(ICTR\)](#)

[ICTR K-to-R Resources](#)

[JHM IRB Researchers Tool Kit](#)

[Research Start Up Assistance](#)

Funding Opportunities

[JHU Data Management Services](#)

[Research Compliance Training](#)



How can NORA support you?

Please reach out to us at

SON-NORA@jhu.edu



Center for Health Equity



How can NORA support you?

Please reach out to us at

SON-NORA@jhu.edu



Qualitative Core

Qualitative Core

Email: SON-QualCoreis@jh.edu

**Nursing Office of Research
Administration (NORA)**

- Kamila A. Alexander



- Janiece L. Taylor



- Anna Beeber



- Jennifer A. Wenzel



- Martha Abshire Saylor



- Catherine Ling



- Rebecca J. Wright





The purpose of the Johns Hopkins School of Nursing Qualitative Core is to lead change and set the example for holistic care and excellence through recognition and support of methodological approaches that highlight, honor, and ensure the inclusion of voices of patients, families, and communities.

Qualitative methods are used when:

- little is known about a topic
- the research context is poorly understood
- the boundaries of a domain are ill defined
- the phenomenon under investigation is not quantifiable
- the nature of the problem is not clear, or the phenomenon needs to be re-examined. (Sandelowski, 2003)

Qualitatively, the researcher “*designs studies by conducting them - as opposed to conducting studies by design*”
(Sandelowski & Barroso, 2003).

Support for Faculty

- **Grant Support**
 - Methodologic Advising
 - Analyses
 - Methods
 - IRB Submissions
 - Writing review
- **Manuscript Support**
 - Development
 - Editing
 - Journal Selection
- **Trainings**
 - Journal Clubs
 - Invited Speakers
 - Presentations on Qualitative elements (Rigor, Saturation, Mixed Methods , Ethics, Application in practice, etc.)
- **Expert Review**
 - Grant Submissions
 - Presentations
 - Project Development

Support for Graduate Students

- **PhD NRSA Proposal Support or Other Grant Submissions**
 - Student works with one Qualitative Core member on the proposal
 - The Student, Advisor, and Qualitative Faculty reach agreed upon aims, research design, and analysis plan
 - Help with determining sampling needs/saturation, coding, analyses
 - Needs to begin working together at least 45 days prior to the submission date
- **Dissertation and/or DNP Projects**
 - If there are qualitative components it is recommended that Qualitative Core Faculty serve on committee
 - Advise in theory use
 - Advise data collection
 - Assist in conducting analyses
 - Review reporting of results

- Early in proposal development stage is the best
- Any question is always better than no question
 - If you are unsure if you need a qualitative consult or if qualitative methods are a good fit, please ask!
- Qualitative Methods
 - Require Rigor and Planning
 - Are Theory Driven
 - Need clear methods
 - Data collection
 - Data Management
 - Data Analyses

Email: SON-QualCoreis@jh.edu



JOHNS HOPKINS

SCHOOL *of* NURSING

Leading the way in education, research and practice – locally and globally.

JHU Resources

Center for AIDS Research

hopkinscfar.org

What can the CFAR do for you?



Administrative Core

Core Directors: Dick Chaisson and Shruti Mehta
Project Administrator: Anne Efron
Program Coordinator: Eileen Martin
Contact: CFAR@jhmi.edu

- Provides integration and coordination of the scientific leadership of the CFAR across Cores, affiliated junior, mid-career, and senior faculty, and with other institutional partners.
- Oversees and coordinates the Scientific Working Groups and other research programs.
- Provides central web and communications platforms for all CFAR cores, working groups and users.

Developmental Core

Core Directors: Andrea Ruff, Jacqueline Campbell, Joel Blankson, Wendy Post, Seun Falade-Nwulia
Contact: Anne Efron (aeffron@jhmi.edu)

- Stimulates new areas of HIV/AIDS-related research and supports the HIV/AIDS research community.
- Assists in evaluating programmatic needs and providing seed money.
- Supports recruitment of key investigators for priority research areas and established investigators not currently working in HIV into the field.
- Expands efforts to recruit and develop under-represented minority investigators in HIV/AIDS research.

Clinical Core

Core Director: Richard Moore
Co-Directors: David Thomas, Jason Farley, Eileen Scully, Leah Rubin
Sr. Manager: Laura Clark
(lclark53@jhmi.edu)

- Provides assistance in the design and conduct of clinical research.
- Offers support for Institutional Review Board submissions.
- Links investigators to a range of experts in HIV clinical and translational research.
- Provides access to resources that support project implementation.
- Works with investigators to enhance recruitment in clinical trials.

Prevention Core

Core Director: David Celentano
Co-Directors: Carl Latkin, Nancy Reynolds, Erica Sibinga
Sr. Manager: Greg Rosen
(jrosen72@jhu.edu)

- Supports junior and senior faculty in the processes of grant development and implementation. Manages the online CFAR Grant Development and Implementation Toolkit (toolkit.hopkinscfar.org).
- Develops and plans targeted events to collaborate and engage in existing research programs.
- Provides mentoring for junior faculty engaged in prevention science.
- Supports training in existing and emerging methodologies and technologies.

Clinical Laboratory and Biomarkers Core

Core Director: Mark Marzinke
Program Manager: Kristin Bigos
(kbigos1@jhu.edu)

- Facilitates access to research labs, clinical labs, and core labs across the Hopkins Enterprise.
- Provides discounted research pricing for the performance of laboratory assays.
- Offers consultation, training and technical support in laboratory practices.
- Provides guidance in meeting regulatory requirements.
- Offers biospecimen storage and potential access to samples banked by other researchers.

Biostatistics and Epidemiology Methodology Core

Core Director: Bryan Lau
Co-Director: B. Aletta Bareng Nonyane
Program Manager: Eryka Wentz
(ewentz1@jhu.edu)

- Provides leadership to support collaborative, educational, and research initiatives for the HIV/AIDS community to promote and support innovative HIV-related research.
- Links investigators with BEM Core members who contribute HIV/AIDS expertise in the following areas: bioinformatics, biostatistical, epidemiological, and dynamic modeling.
- Provides support for data management through the Johns Hopkins Biostatistics Center (JHBC).
- Trains and mentors staff, students, fellows, and junior investigators in state-of-the-art population and quantitative methods used in HIV research.

IMPLEMENTATION SCIENCE CORE

Co-Directors: Sheree Schwartz, Laura Beres, Stefan Baral
 Program Manager: Lisa Lucas
 (llucas@jhmi.edu)

- Resource development including grant review, targeted events, monthly meetings to foster knowledge sharing and on-line repositories and libraries
- Promotion of inter, intra and extra CFAR and JHU networking, collaboration and synergies.
- Implementations Science consultation Hub
- Inter-CFAR IS Fellowship for Early Stage Investigators

**BALTIMORE HIV COLLABORATORY/
GENERATION TOMORROW**

Director: Risha Irvin, Kathleen Page
 Program Coordinator: Jasmine Blue
 (jblue3@jhmi.edu)

- Promotes community linkages between JHU researchers and HIV focused NGOs, the Baltimore City Health Department, and people affected with HIV/AIDS
- Identifies, recruits and trains under-represented minority undergraduates, graduate students and fellows in community-based HIV/AIDS research in Baltimore.
- Training and field experience for students and community-based health workers in Baltimore.
- Summer Health Disparity Scholars Program

Scientific Groups

Adolescent and Young Adult (AYA) SWG

Co-Directors: Allison Agwu, Julie Denison and Renata Sanders. Contact: Eileen Martin (emarti77@jhmi.edu)

Vaccine Response and Immunotherapeutics (VRI) SWG

Co-Directors: Anna Durbin, William Moss, Andrea Cox. Contact: Eileen Martin (emarti77@jhmi.edu)

HIV Aging Mentored-Research Group (HAMR)

Co-Directors: Todd Brown, Greg Kirk. Contact: Eileen Martin (emarti77@jhmi.edu)

Inter-CFAR Sub-Saharan Africa (SSA) SWG

Co-directors: Haneefa Saleem and Dick Chaisson. Contact: Eileen Martin (emarti77@jhmi.edu)

Substance Use and HIV Interest Group

Director: Seun Falade-Nwulia. Contact: Anne Efron (aeffron@jhmi.edu)

These groups aim to address scientific gaps; promote multidisciplinary collaboration, education, and synergy; help early-staged investigators find projects/mentors; provide feedback on new ideas and ongoing work; foster career development; pre-review grant applications and other proposals; and create a dynamic forum for scientific discussion.

Programs and Services

CFAR Faculty Development Awards in HIV Research: \$50,000 Pilot grants to junior faculty to enable and support HIV/AIDS research projects. The prime purpose of these awards is to strengthen the individual's ability to secure independent funding.

Mentoring: Both formal and informal mentoring processes are available to young faculty interested or engaged in HIV research at the JH MI through each core as appropriate. You may contact individual cores directly or the Developmental Core for referrals.

Internal Scientific Reviews: JHU Faculty members applying for funding in the area of HIV/AIDS are able to request an internal scientific review of their grant application.

Specific Aims Lightning Rounds: Round table discussions with senior and junior faculty to brainstorm and fine tune aims prior to grant development.

Grant Development and Implementation Toolkit: <http://toolkit.hopkinscfar.org/>

Center for Nursing Inquiry

<https://www.hopkinsmedicine.org/nursing/center-nursing-inquiry/>



Are you interested in research, EBP or QI?

WE'RE HERE TO HELP!



The Johns Hopkins Center for Nursing Inquiry offers a variety of educational resources and expert guidance to help nurses engage in meaningful, high-quality scholarly work.

FOR MORE INFORMATION, VISIT: hopkins.org/CNI



Clinical Research IT Systems and Services

Clinical Research IT Systems and Services

CCDA



REDCap



PACE



OpenSpecimen



ClinicalTrials.gov Program

clinicaltrials.gov



History of our Program

The Johns Hopkins ClinicalTrials.gov Program was developed in June 2016 by Dr. Daniel Ford and Anthony Keyes. This Program was designed to address the needs of our investigators and study team members.

Johns Hopkins is committed to honoring our commitment to research participants by ensuring transparency through the accurate and timely registration, updating and results reporting of clinical research.

Our mission is to increase our institutional compliance to all applicable regulations, such as the FDA Final Rule and the NIH Companion Policy (compliance date April 2017).

The ClinicalTrials.gov Program will assist investigators with:

- Meeting ethical, legal and scientific responsibilities for clinical trials registration and results reporting
- Identifying trials that require registration and results reporting
- Tips, tricks and helpful content
- Up-to-date information on institutional and federal policies
- Direct effort upon request (billable per hour)



Anthony Keyes

Oswald Tetteh

Kimberly Hill

SCHOOL OF MEDICINE
SCHOOL OF PUBLIC HEALTH
SCHOOL OF NURSING
ALL CHILDRENS HOSPITAL
SIDNEY KIMMEL COMPREHENSIVE CANCER CENTER

Oswald Tetteh, MD, MPH
Kimberly Hill, MS
registerclinicaltrials.jhmi.edu

KENNEDY KRIEGER INSTITUTE
Eun Sol Yung
JungES@kennedykrieger.org



ClinicalTrials.gov
@JHU

An in-house program assisting investigators and study teams with ClinicalTrials.gov registration and results reporting.

registerclinicaltrials@jhmi.edu
<https://ictr.johnshopkins.edu/clinicaltrials-gov>

ClinicalTrials.gov Program Things to Remember

School of Medicine & School of Nursing
Anthony Keyes, MBA, Oswald Tetteh, MD, MPH, Kimberly Hill, MS
 Based at our main office, the team has been working with faculty and research staff at the Schools of Medicine and Nursing since the inauguration of our program in June 2016. Dr. Oswald Tetteh and Kimberly Hill are available to assist investigators and study team members with any issues that may arise while using the ClinicalTrials.gov Protocol Registration and Results System (PRS) to register and enter results. They ensure that our records are accurate and up-to-date before they are submitted for review and published on ClinicalTrials.gov.

Sidney Kimmel Comprehensive Cancer Center
 In April 2018, the ClinicalTrials.gov program was introduced to the Sidney Kimmel Comprehensive Cancer Center. We have been working with the clinical research investigators and study teams to improve compliance and ensure prospective compliance. Each cancer research program is allotted dedicated time to address non-compliant records and share best practices to promote compliance with the study team. In addition, training sessions have been developed in order to teach research staff about current requirements and guidelines as well as how to use the PRS for registration and timely results reporting.

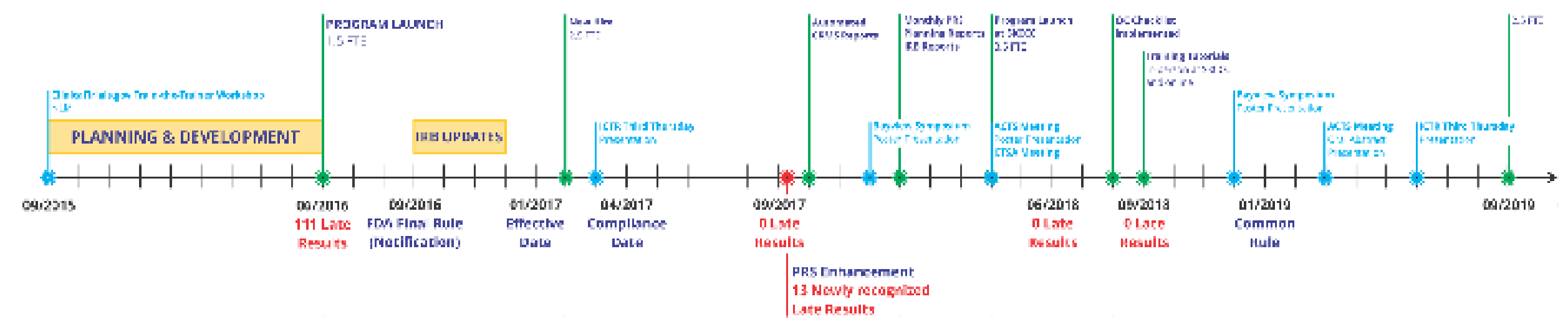
- ### Important Deadlines
- 📅 **Register** before enrollment*
 - 📅 **Verify** your record **once-a-year**
 - 📅 **Update** your record within **30 days** of any change
 - 📅 **Enter Results**** for the primary outcome measure **within 12 months of the Primary Completion Date**
 - 📅 **Enter Results** for all remaining outcome measures **within 12 months of the Study Completion Date**
 - 📅 **Reply to PRS Comments** **within 15 calendar days** for registration/updated records **within 25 calendar days** for results-related issues

Program Timeline

Federal requirements per FDAAA 801 and NIH Component Policy
 Any non-compliance will be subject to fines up to \$11,000/study/day as well as potential loss of grant funding by the NIH.
 FDA Final Rule (21 CFR Part 312)

*Federal regulations require all Applicable Clinical Trials to be registered within 21 days of starting enrollment, but ICMJE requires registration BEFORE enrollment to be eligible for publication. We therefore, recommend all studies to register BEFORE starting enrollment!

**Results reporting is required for all Applicable Clinical Trials, NIH-funded trials, and some other grantors (check your Terms & Conditions)

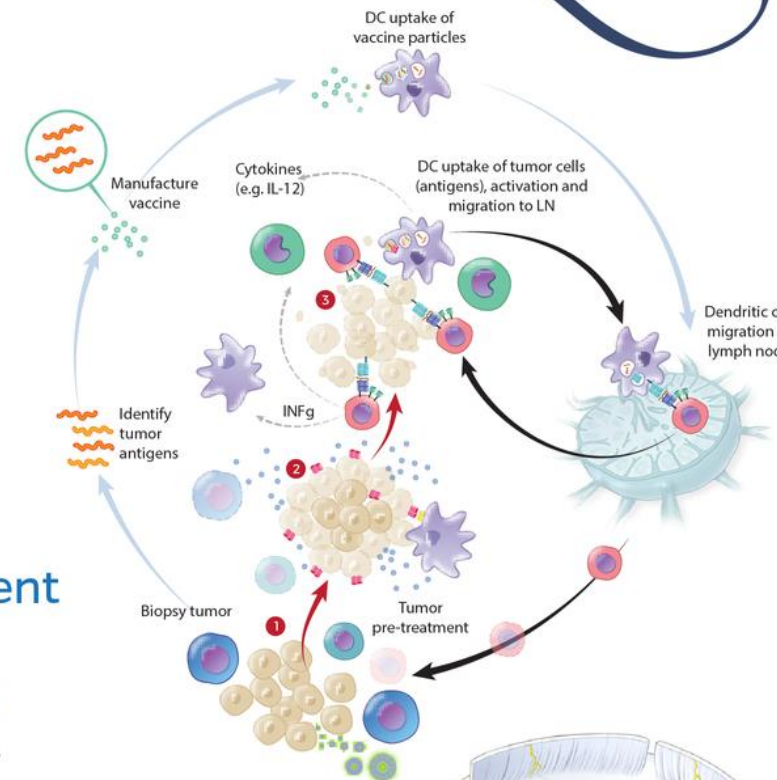


Community Research Advisory Council (C-RAC)

<https://ictr.johnshopkins.edu/community-engagement/c-rac/>

Department of Art as Applied to Medicine

medicalart.johnshopkins.edu/services



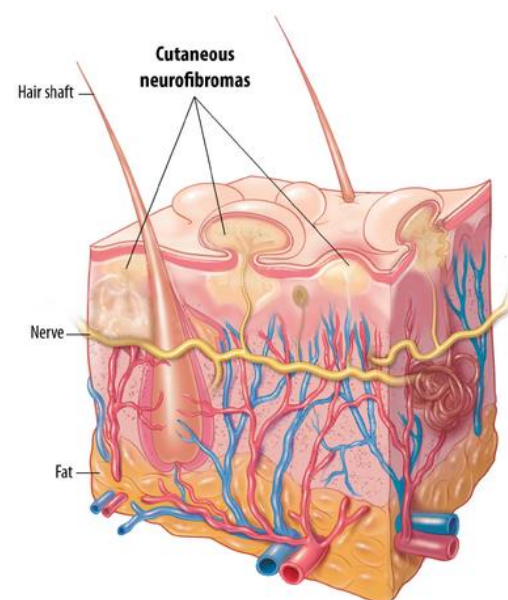
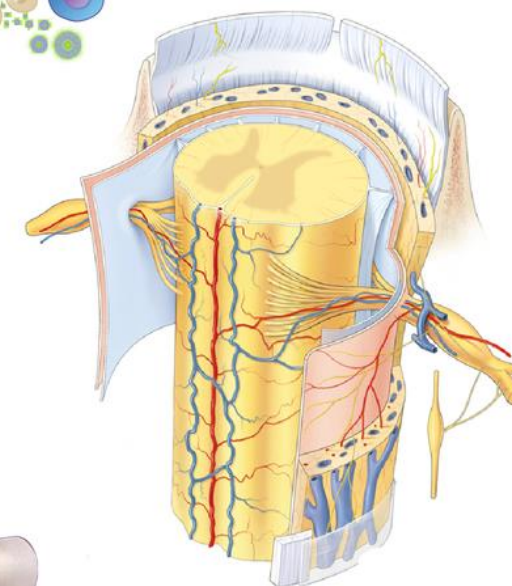
Faculty and Staff in the Department of Art as Applied to Medicine

collaborate with Johns Hopkins colleagues to support research, education and clinical care.

Services include

- Medical & Scientific Illustration
- Animation
- 3D Printing & Visualization
- Facial Prosthetics
- Graphic Design
- Scientific Presentations
- Websites and Mobile Apps

Contact us to schedule a free consultation:
medart-info@jhmi.edu
 (410) 955-3213



Visit us at medicalart.johnshopkins.edu/services

Education and Training Opportunities at the Johns Hopkins Center for Health Equity

healthequityhub.com



JOHNS HOPKINS
CENTER *for* HEALTH EQUITY

Education and Training Opportunities at the Johns Hopkins Center for Health Equity

Deidra C. Crews, MD, ScM

Professor of Medicine, Johns Hopkins University School of Medicine

Deputy Director, Johns Hopkins Center For Health Equity

Johns Hopkins Center for Health Equity

MISSION

Promote equity in health for populations experiencing health disparities through:

1. Advancing scientific knowledge
2. Educating and training leaders
3. Partnering with communities
 - Raising public awareness of health inequities
 - Promoting sustainable changes in practice and policy



Training Program

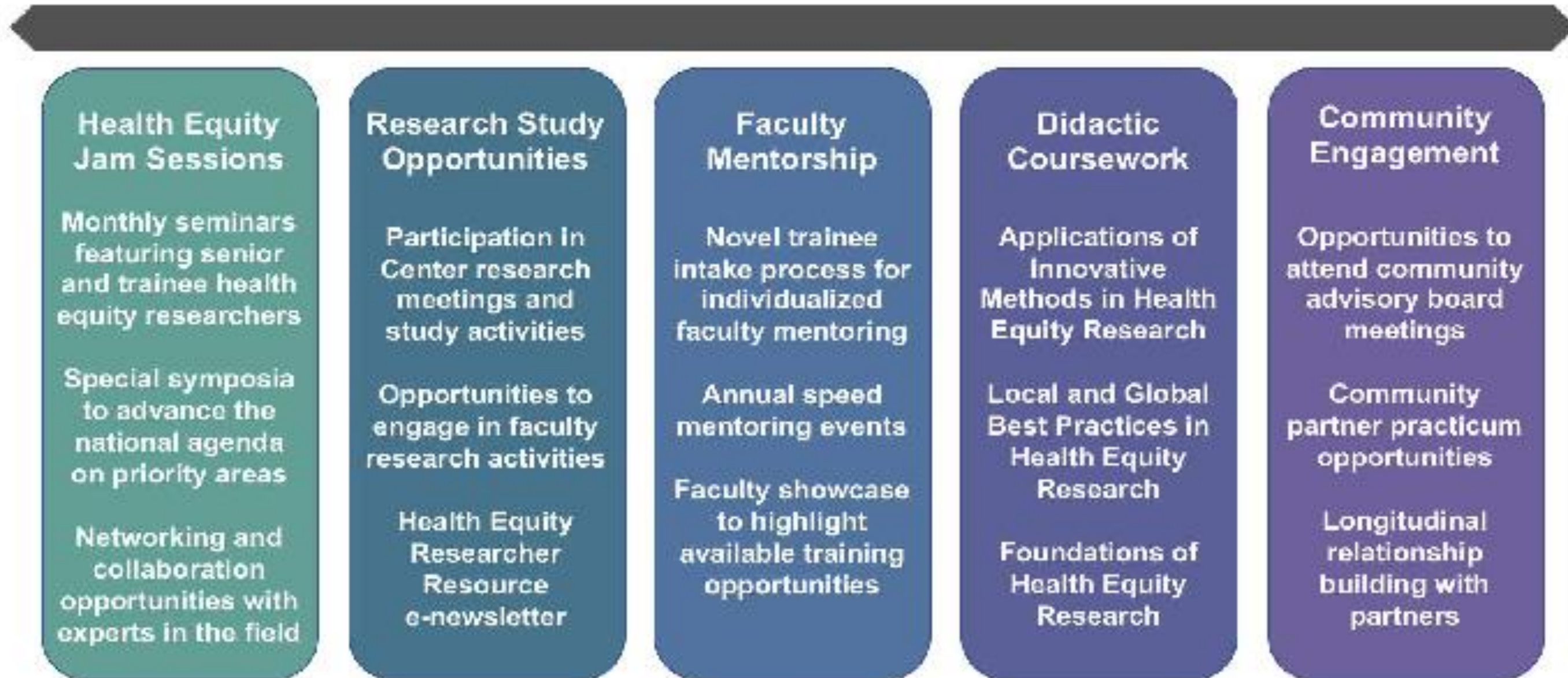
- Created a training program for health professionals and researchers in 2010
- Trained ~200 individuals ranging from high school and undergraduate students to Master's and pre-doctoral students, postdoctoral fellows, and junior faculty
- Trainee accomplishments include:
 - National awards, grants, and faculty positions
 - Health equity publications
 - Leadership roles
 - High school and undergraduate students who matriculated into medical, nursing, public health or other graduate programs in science



Education & Training Programs




Johns Hopkins Center for Health Equity Education and Training Program Activities



JAM Sessions and Special Events


HEALTH EQUITY JAM SESSION
 People, Place, & Power:
 Making the Connection

Thomas K.M. Cudjoe, MD, MPH
 Robert and Jane Meyerhoff Endowed Professor
 Assistant Professor of Medicine
 Division of Geriatric Medicine and Gerontology
 Johns Hopkins University School of Medicine



WEDNESDAY, NOVEMBER 9, 2022
 3:00 pm - 4:30 pm
 Session held via ZOOM

Questions? Email: healthequitytraining@jhmi.edu



- Provides a forum for faculty and trainees working on health equity research to discuss research-in-progress, new research ideas and proposals, responses to peer review, collaborations and funding, and career development – as well as to be inspired and energized by each other in an informal setting
- We also hold special events and co-sponsor seminars with other research programs



Addressing Food Insecurity in Baltimore to Promote Health Equity. An Expert Panel Discussion

Mentored Research Opportunities

- Individualized mentoring by Center faculty
- Participation in research team meetings
- Opportunities to
 - Participate in community engagement activities
 - Contribute to study materials and protocols
 - Interview patients, clinicians, other healthcare staff, and community members
 - Collect anthropometric measures and other medical tests
 - Analyze qualitative and quantitative data
 - Contribute to scientific presentations and manuscripts



Health Equity Courses for Academic Credit

- **Bloomberg School of Public Health**
 - Applications of Innovative Methods in Local and Global Health Equity Research (3rd Term – Cooper)
 - Health Equity Research Methods to Address Social Determinants of Health (4th Term – Purnell)
 - Promoting Anti-Racist Policies and Practices Across Healthcare Settings (Cooper & Marsteller)
- **School of Medicine**
 - Health Equity TIME Course for medical students
 - JH Equitable Healthcare - A Virtual Clinical Elective for medical students
 - Racism, Medicine and Our Community Conference series for Internal Medicine and Pediatrics residents
 - General Internal Medicine Fellowship



Massive Open Online Courses (MOOCs)

- We have also developed two MOOCs on the Coursera platform and trained over 7,000 people around the world since the beginning of 2020
- In early 2023, we will release a new MOOC focused on local global bidirectional learning to advance health equity

<https://www.healthequityhub.com/online-learning-mooc-courses-home>



Community Engagement Activities





Investigator Development Core



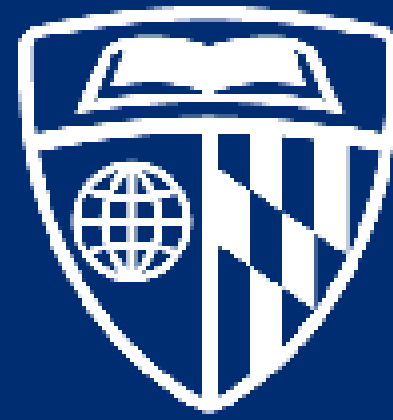
- Established as a pilot project program in 2022 to support innovative research related to cardiometabolic health equity
- The program - consisting of Early-Stage Investigators - includes a built-in community network, faculty mentoring, and structured didactic training to support awardees

How Do I Become a CHE Trainee?

- Send an email to healthequitytraining@jhmi.edu
 - We will ask you to complete a confidential online survey to tell us your primary content and methodological areas of interest
 - Share specific training opportunities provided by Center faculty
 - Try to match you with an appropriate faculty mentor, research study group and/or community-based experience



Visit our website for more information
www.healthequityhub.com

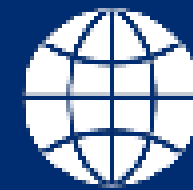


JOHNS HOPKINS

CENTER *for* HEALTH EQUITY



healthequitytraining@jhmi.edu



www.healthequityhub.com



@JHhealthequity



@JHhealthequity

I-Corps Program

<https://ventures.jhu.edu/programs-services/fastforward/resources-programs/icorps-program/>

Johns Hopkins Sheridan Libraries

<https://www.library.jhu.edu/staff/peter-lawson/>

REDCap

redcap.jhu.edu



BEYOND REDCAP: EXPORTING YOUR DATA

REDCap makes it easy to export your data, and allows you to do so in multiple formats

- Export data formatted for Excel (CSV) or for your statistical tool of choice (via SPSS, SAS, R, or STATA), or download it as a CDISC ODM file
- Easily strip identifiers from your data before exporting—and manage other users on your project can export them at all
- Shift dates by a different amount for each record—you can still calculate date differences, but others can't trace them to a specific appointment



(Rev 2022.11.17a)

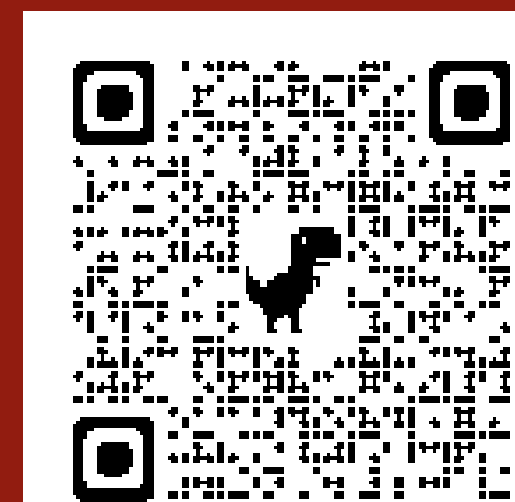
ABOUT

REDCap is a HIPAA compliant database program that you can use to manage clinical research and JHU QI data. It's available (in some instances, at no cost) to researchers performing IRB-reviewed research and employees at JHU (SPH, SOM, SON, KKI, APL).

CONTACT US

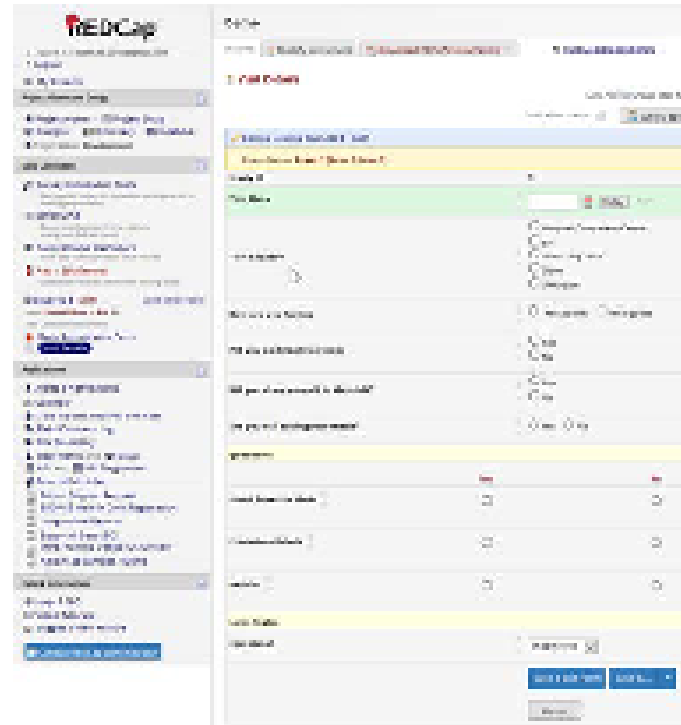
Email: redcap@jhu.edu

REDCap Website: redcap.jhu.edu



REDCap at
Johns
Hopkins
University

*Research Electronic Data
CAPture*



REDCap IS A HIPAA COMPLIANT, JH APPROVED TOOL FOR MANY TYPES OF PROJECTS:

- Research and QI Projects
- Projects containing sensitive information (PHI, PII);
- Single and Multi-site projects;
- Projects that include surveys;
- Longitudinal projects (structured and unstructured.)
- EPIC Integration
- Multi-Language Management

REDCap IS SECURE:

- Approved by JH Data Trust Council;
- JHED Enabled;
- User rights tailored to specific requirements for each user's role;
- PHI/PII field tagging.

HOW DO I GET STARTED?

Not sure where to start? No worries! Visit www.redcap.jhu.edu and click on the "Getting Started with REDCap" link. This document will walk you through, one step at a time.

HOW MUCH DOES IT COST?

There are three REDCap support tiers: Bronze, Silver, and Gold. Please review the "Getting Started with REDCap" document (mentioned above) for more detailed information.

REDCap Alerts automatically notify your team of key conditions (e.g. a survey response requiring immediate attention)!

SURVEYS

REDCap handles surveys very well. You can send out survey links manually or you can setup automated survey invitations (and reminders) to be sent at appropriate intervals or based on some other condition within the data.

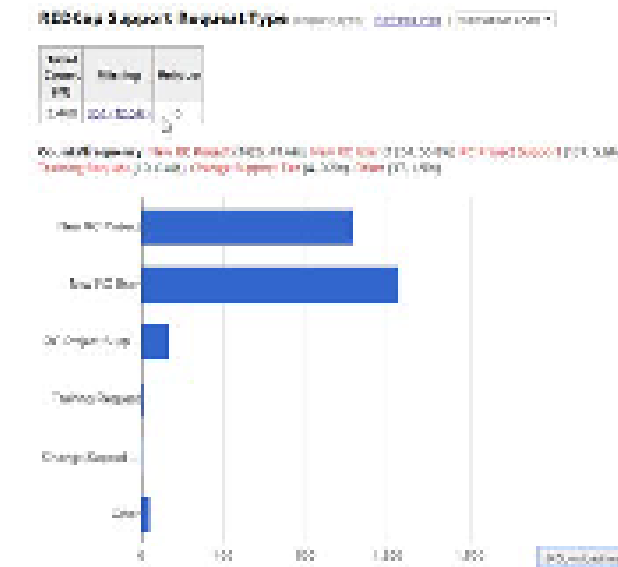
ALERTS

Receive automated notifications based on data received in a survey ("I wish to speak to someone about my treatment").

LONGITUDINAL PROJECTS

REDCap allows for easy setup of longitudinal projects, including making it easy to schedule participants based on your study's timeline.

GRAPH YOUR DATA!



BEYOND DATABASES

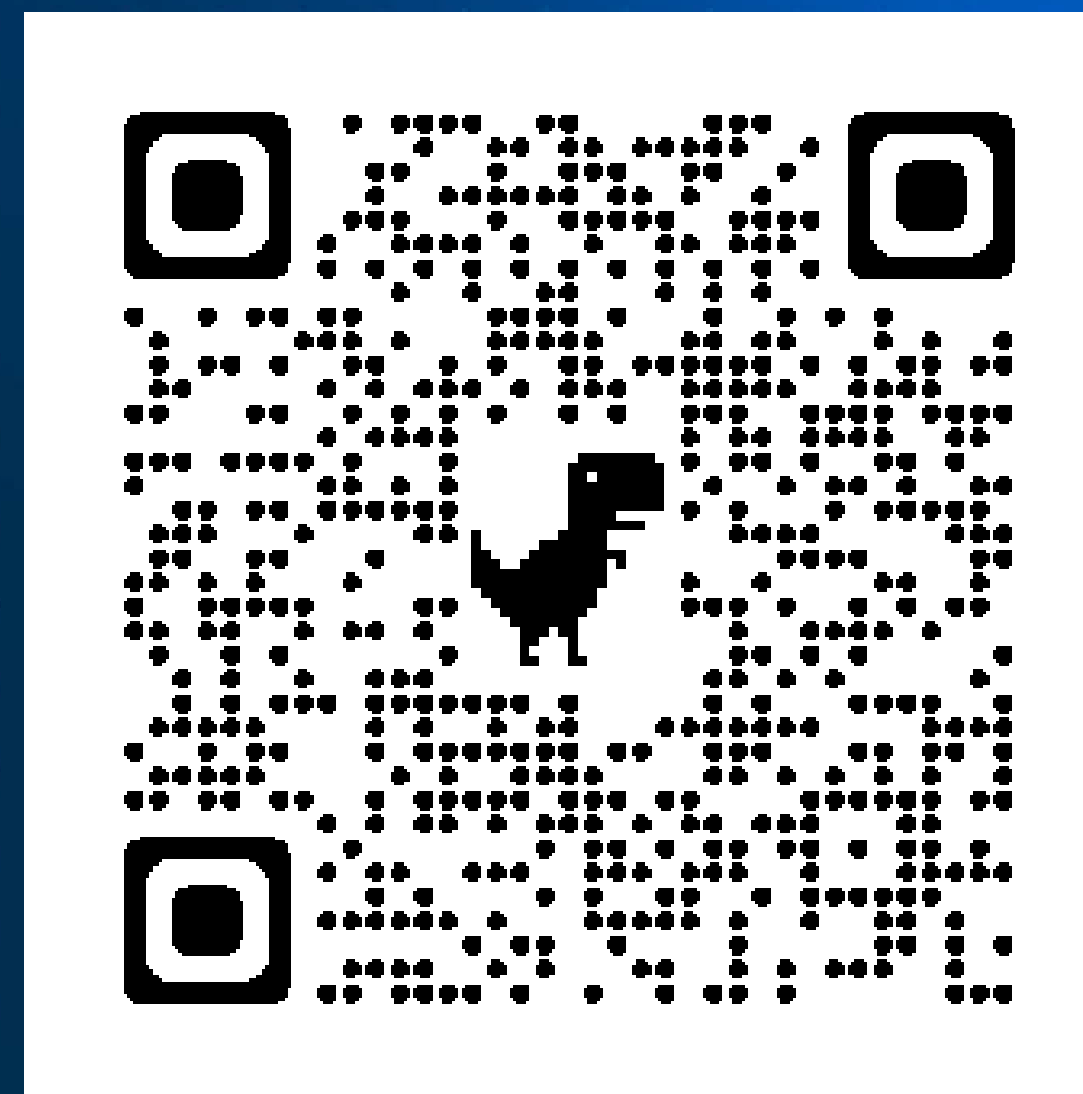
REDCap is designed to support the collection of high quality research/ QI data, via:

- Structured data types (text, number, date/time, yes/no, email, ...) ensure entered data conform to data standard;
- Tag fields as identifiers (name, dob...);
- Branching logic (hide fields, when appropriate);
- Min/Max ranges (numbers, dates...);
- Flag "required" fields;
- Calculate values on the fly;
- Create your own data quality rules;
- Auditing: ALL project activity is logged, from page views to field edits.
- Restrict user rights to only those needed for their responsibilities;
- Use Data Access Groups (DAG's) for multi-site studies, allowing site members to see only their site's data;
- And much more...

REDCap also has additional data quality tools to support the highest quality data possible.



redcap.jhu.edu



Scott Carey
Sr. Software Engineer
Sr. REDCap Administrator
Institute for Clinical and Translation Research
School of Medicine
Johns Hopkins University

Research Coordinator Support Services (RCSS)

<https://ictr.johnshopkins.edu/service/study-conduct/rcss/>



The ICTR Research Coordinator Support Service (RCSS) supports more than 25 investigators working on over 30 studies.

Investigators turn to RCSS:

- To take on projects they would normally have to turn down
- To support research teams that have lost staff members
- To supplement their own staffing/knowledge gaps
- To grow research portfolios

Requesting Support

We work with Investigators all across Johns Hopkins

SCHOOL OF MEDICINE
SCHOOL OF PUBLIC HEALTH
SCHOOL OF NURSING
SIDNEY KIMMEL COMPREHENSIVE
CANCER CENTER

<https://ictr.johnshopkins.edu/service/study-conduct/rcss/>

- 1.) Go to our website.
- 2.) Click on the blue “Make a Request” field in the upper-right corner

Make a Request

- 3.) A member of our team will contact you within 1 business day.



Research Coordinator Support Service (RCSS)

The ICTR Research Coordinator Support Service (RCSS) is a pool of research coordinators that are available for hire on a part-time basis by Johns Hopkins researchers.

<https://ictr.johnshopkins.edu/service/study-conduct/rcss/>

Research Coordinator Support Service (RCSS)

Things to Remember

About Us

Formerly known as SCAMP, the ICTR Research Coordinator Support Service (RCSS) is a pool of trained coordinators able to handle a wide range of customizable responsibilities to best fit the needs of your research team. The pool consists of apprentices (who are a part of the Coordinator Apprenticeship Program (CAP)), research program coordinators (many of whom have completed the Apprenticeship Program), senior coordinators, and a program manager.

Training

All staff receive training prior to beginning work assignments and continual mentoring to ensure the study is running efficiently and per federal and University guidelines and regulations. Staff will have completed the following minimal training: Human subject research protections, Good Clinical Practices (GCP), eIRB, CRMS (Clinical Research Management System), Epic, DOT/IATA, clinical skills (i.e., vital signs, ECG, and phlebotomy) and CPR.

Program Timeline

This Program started in 2012 and has hired and trained over 100 Coordinators, most still in clinical research and many still here at Johns Hopkins.

Scheduling

Scheduling is based on the number of hours needed per week. Hours may also be built into grants and/or as a salary support model based on the full-time equivalent (FTE) support needed.

If an investigator/department makes a coordinator hire, or no longer needs support, the RCSS Coordinator will assist with the transition process and will continue providing support until the transition is complete.

Coordinator Responsibilities

RCSS Coordinators are available to work with study teams at all stages of research. They are experienced with drug and device studies, pharmaceutical-sponsored, federally-funded and investigator-initiated studies across several disease states and disciplines. They can assist with (but not limited to) the following:

- eForm and informed consent creation and modification
- eIRB applications (i.e., initial, changes in research and continuing reviews)
- participant screening and recruitment consenting
- performing study visits
- data entry, and resolving queries
- creating and completing source documents and case report forms
- sample collection, processing and shipping

Payments & Fees

RCSS coordinators are available as a fee-for-service program, making the process of finding a part-time coordinator easier. This service is ideal for junior faculty to seasoned investigators. Any investigator may find themselves in need of a coordinator due to sudden absences, resignation, or retirement and we work quickly to provide services.

RCSS coordinators are not added to your payroll. Study teams are provided a detailed monthly invoice billed directly to their internal order number. The process is straightforward even for investigators with multiple studies or departments using multiple internal order numbers.

Effective July 1, 2022: (rates inclusive of all fringe)

- Research Coordinator support is \$60/hour
- Research Regulatory Specialist support is \$65/hour
- Senior Research Program Coordinator support may also be available for more complex studies and situations at \$65/hour

Prior to beginning a work assignment, a study start-up meeting will be scheduled with the study team. At this meeting, a concise work agreement will be established with the study team that will outline the responsibilities and tasks that the RCSS coordinators will perform, and the hours required by the study team. The work agreement may be modified as situations change.

School of Medicine Biomedical Informatics and Data Science Courses



QR Code

Biomedical Informatics and Data Science Courses

Introduction to Public Health and Biomedical Informatics

Core principles applied to the range of health, from prevention through illness, to population and public health

Applied Clinical Informatics

Focused on leveraging clinical information systems and technology to improve patient and family-centered care

Leading Change Through Health Informatics

Prepares learners to lead organizations implementing new IT systems

Informatics and the Clinical Research Lifecycle: Tools, Techniques, and Processes

Addresses the entire life cycle of a clinical-research program from idea generation through results dissemination

Health Information Systems: Design to Deployment

Project-based course covering the research stages to deployment of software design and development

Clinical Decision Analysis

Theory and practice of decision analysis as applied to the clinical context, focused on clinical decision support

Data Science Track

Introduction to Precision Medicine Data Analytics

Evolving field of precision medicine and the role of big data analytics in improving patient care

Database Querying in Health

Relational databases using SQL along with special issues related to health information systems

Clinical Data Analysis with Python

Discussion and interactive Python exercises provides practical experience working with EHR data

Observational Research with Observational Medical Outcomes Partnership (OMOP)

Practical exercises with the OMOP common data model (CDM) from the OHDSI community

Implementing Fast Healthcare Interoperability Resources (FHIR)

Hands-on experience working on integrating digital health and clinical interoperability

Natural Language Processing in the Health Sciences

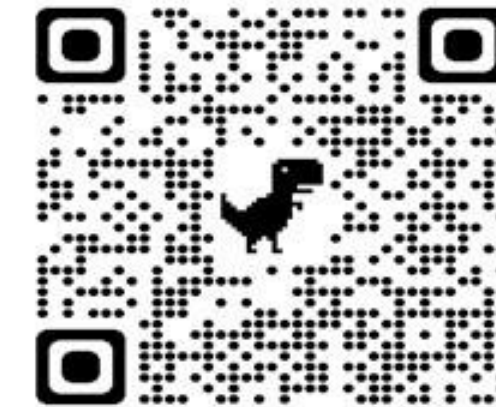
Orientation to the various applications of NLP in biomedicine, healthcare, and public health

Questions? Email JHInformatics@jhu.edu

SON Research Retreat 2022 ICTR Informatics Presentation

CCDA

Core for **C**linical **R**esearch **D**ata **A**cquisition (CCDA) assists researchers with accessing clinical data for research



Services we Provide

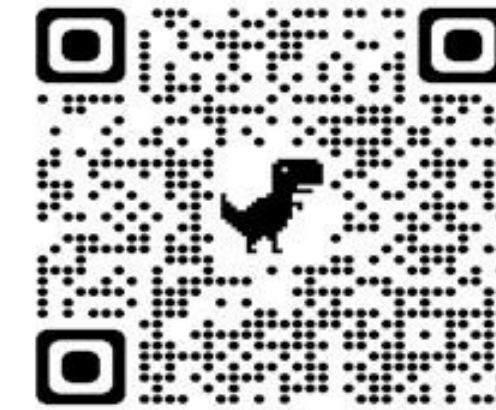
- Data Feasibility for Grant Applications
- Sample-Size Estimates
- Data navigator for PMAP
- MyChart Recruitment
- Research Data Extracts
- Data De-identification services
- Honest Broker services
- SlicerDicer & TriNetX tools assistance

Data Sources we can Access

- Epic Clarity
- EDW
- PMAP
- OMOP
- CaseMix Datamart
- CRMS

CCDA for PMAP

Core for **C**linical **R**esearch **D**ata **A**cquisition (CCDA) provides full data navigator services for PMAP users



Navigator Services for PMAP

- Data wayfinding from study development to study close
- IRB protocol assistance for registries and secondary protocols
- Data specification documents
- Database projections
- Training on data analytics tools
- Epic workflow expertise

REDCap



- REDCap (**R**esearch **E**lectronic **D**ata **C**apture) is a secure, HIPAA compliant, web-based application that supports data capture and management for research studies. REDCap at Johns Hopkins is co-sponsored by the Johns Hopkins School of Public Health and the Johns Hopkins School of Medicine.
 - ✓ Secure / HIPAA Compliant
 - ✓ Easy to use
 - ✓ Robust
 - ✓ Integrates with EPIC

PACE

PACE (**P**rogram to **A**ccelerate **C**linical Research using **E**pic) helps clinicians collect data by building customized tools and content in Epic

Make a Request



Research Recruitment

MyChart

Reporting Workbench

In Basket Alerts

Patient-Reported Outcomes via Questionnaires

Automatic Assignment

Response Alert

Synopsis & SmartPhrase

Discrete Data Collection

Flowsheet

SmartForm

Reports



OMOP Common Data Model



- **O**bservational **M**edical **O**utcomes **P**artnership
- OHDSI Community: International, collaborative, open-source
- Patient data mapped to standard concepts
- Results and analyses shared among institutions
- CCDA is now able to provision data in the OMOP format
- Fully de-identified OMOP accessible to all Hopkins entities coming soon!

OpenSpecimen



We Offer

- Annotation of research and clinical data
- Specimen information interfaced with PMAP
- Query capability
- Specimen and derivative tracking
- Specimen event tracking
- Epic patient lookup-enabled
- Considered a "Tier A" best practice for storing biospecimen metadata, including PHI

Clinical Research IT Systems and Services

CCDA



REDCap



PACE



OpenSpecimen



JOHNS HOPKINS
INSTITUTE *for* CLINICAL &
TRANSLATIONAL RESEARCH

Welch Center

https://www.hopkinsmedicine.org/gim/news/2010_News_Items/10-7-10.html



JOHNS HOPKINS
SCHOOL *of* NURSING

NURSING OFFICE OF
RESEARCH ADMINISTRATION