

PREPARED BY  
THE OFFICE OF  
INTERNATIONAL  
AFFAIRS  
UNIVERSITY OF  
MICHIGAN  
SCHOOL OF  
NURSING



# International Network for Doctoral Education in Nursing

## Newsletter

### 2007 INDEN Board

#### President

Richard W. Redman, 2006-09  
rwr@umich.edu

#### Treasurer

Lorraine Ellis, 2006-09  
l.b.ellis@sheffield.ac.uk

#### Secretary

Susan Gennaro, 2004-07  
Susan.Gennaro@nyu.edu

#### Secretary — Elect

Patricia Davidson, 2006-09  
p.davidson@uws.edu.au

#### At-Large Board members

Hala Darwich, 2004-07  
hdarwich@umich.edu

Morag Gray, 2004-07  
m.gray@napier.ac.uk

Shiow-Li Hwang, 2006-09  
silhwang@gw.cgic.edu.tw

Hester Klopper, 2006-09  
vpkhck@puk.ac.za

Wipada Kunaviktikul, 2005-08  
wipada@mail.nurse.cmu.ac.th

Shu-Fang Vivienne Wu, 2005-08  
s7.wu@student.qut.edu.au

#### INDEN Website

[www.umich.edu/~inden/](http://www.umich.edu/~inden/)

### Inside this issue:

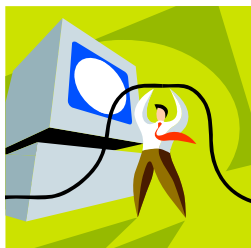
President's Greeting	1
Letter from the Editorial Team....	2
Report from Dr. Kristiina Hyrkäs....	3
INDEN UPDATES	3
DEVELOPMENTS IN INTERNATIONAL DOCTORAL PROGRAMMES	5
STUDENT EXPERIENCE	8
RESEARCH UPDATE	8
CONFERENCE ANNOUNCEMENTS	9
REMINDERS/OTHER	11

Volume 6, Number 1

January 2007

# HAPPY NEW YEAR

## President's Greeting



Greetings to each of you as we approach this busy time of year! I know that each of you is tending to your multiple academic responsibilities. I wanted to assure you that your officers and volunteers at IN-

DEN have been equally as busy. I'd like to give a brief update on major activities since the last *Newsletter*.

Several of us have been busily planning our upcoming INDEN meeting in Japan. We're aiming to hold the meeting at St. Luke's College of Nursing in Tokyo (a convenient train ride from the ICN venue in Yokohama). The dates for the meeting are May 26 and 27, 2007. In addition, there will be a workshop for doctoral students on May 28<sup>th</sup>. This year's conference is entitled "Critical Challenges in Nursing Doctoral Education for the 21<sup>st</sup> Century" and promises to offer outstanding presentations and discussions from leading nursing educators around the globe. Our dates will work well for those of you who are also participating in ICN activities. The Council of National Representatives meets on May 27 – 29 and the ICN opening ceremony will be held on May 29. The scientific program at ICN is scheduled for May 30 – June 1. Hopefully all of you have your calendars marked. If not, please do so now and make every effort to attend.

Progress has been made on other INDEN initiatives. The International Postdoctoral Mentoring Program in Nursing, jointly sponsored by INDEN and Sigma Theta Tau International has been successfully inaugurated. I would personally like to acknowledge Professor Shaké Ketefian and her committee for planning and launching this initiative so successfully. The first group of fellows

will be working at King's College (London) and the Universities of Pennsylvania and Michigan (U.S.). We look forward to hearing about this program at the meetings in Japan. Another INDEN activity was our recent co-sponsorship of workshops with colleagues at the University of Western Sydney and Queensland University of Technology, both in Australia. These workshops were held in conjunction with the International Council on Women's Health Issues Congress held in Sydney in November. These initiatives are exciting and demonstrate INDEN's commitment to furthering the educational and research development of doctoral students and post-doctoral fellows. Bravo to all who made these activities a reality!

I would like to acknowledge the outstanding efforts and international collaboration demonstrated by our newsletter editorial team. I think you will agree with me that Dr. Kristiina Hyrkäs, (USA) and Dr. Catrin Evans (UK) deserve special recognition for this excellent newsletter. Thanks to each for this wonderful service for INDEN!



The INDEN Board members fully appreciate all of your ongoing contributions to the organization. If there is anything that we might do from

your perspective, please let me hear from you. My best to each of you!

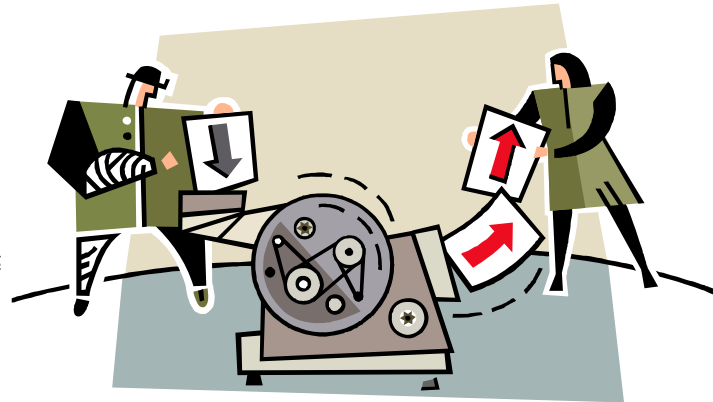
Richard W. Redman  
President, INDEN  
University of Michigan  
Ann Arbor, Michigan, USA

## Letter from the Editorial Team and the Newsletter and Publications Committee

This edition of the INDEN newsletter marks a transition in editorship. The newsletter will now be edited by a small five member team from Nottingham University's School of Nursing (U.K.) Post-Graduate Studies' Committee. The editorial team is led by Dr. Catrin Evans, and she and other team members briefly introduce themselves below. The team would also like to convey many thanks to the previous editors - Dr. Shaké Ketefian (University of Michigan) and Dr. Morag Gray (Napier University) for handing over the baton. They are a hard act to follow! Thanks also to Shaké for continuing to help with the publication process. The current newsletter follows a similar format to previous editions, but we hope to develop the style, content and engagement of INDEN members over the coming year. In this edition, Dr. Kristiina Hyrkäs, Co-Chair of the INDEN 'Newsletter and Publishing Committee' gives a report outlining some suggestions on how the newsletter could be developed. Our ideas depend heavily on the participation of INDEN members, so do expect some emails coming your way!



In this edition, we provide some updates on INDEN activities and report some exciting developments in doctoral education in a number of countries. We profile



a recent doctoral graduate from Nottingham who has returned to her job in Taiwan, and provide an update on innovative research being undertaken to evaluate the professional nursing doctorate. We also include a number of announcements of workshops and conferences.

### Members of the Editorial Team, School of Nursing, Nottingham University, U.K.

**Dr. Catrin Evans** is a lecturer with research interests in HIV/AIDS. She has experience of working in many different countries, and is the international link person for the School of Nursing. She is involved in promoting student mobility, as well as developing systems, services and structures to provide a high quality learning environment for the School's growing number of international post-graduate students.

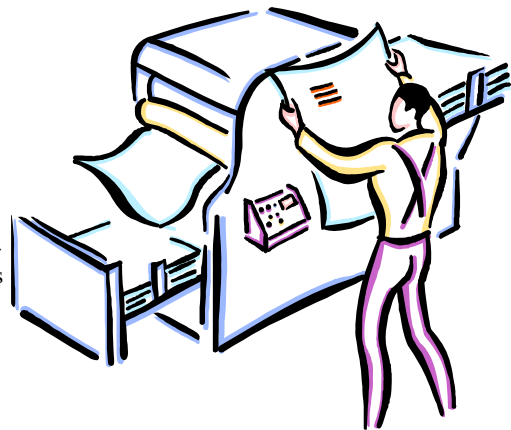
**Professor Davina Porock** is the Director of Postgraduate Studies and Professor of Nursing Practice at the School of Nursing. She has worked in Australia, the USA and now in the UK.

Davina's clinical and research background is in cancer and palliative care. Davina states that advising research students is one of the most satisfying parts of her work.

**Dr. Keith Stevenson** is an Associate Professor and is Director of the MPhil/PhD programme. His programme of research focuses upon quality of care in primary care settings, and on student experiences and expectations of higher education.

**Ms. Linda East** is Deputy Director of Professional Post Graduate Education and Course Leader of the MSc in Advanced Nursing and the Professional Doctorate Programme. Her current research focuses on issues related to refugees and asylum seekers.

**Dr. Alison Edgley** is Pathway Co-ordinator for the cross-faculty ESRC recognised MA Research Methods (Health Studies). Her research programme is highly interdisciplinary and is concerned with studying



the relationship between the state and state organisations and the individual as professional or lay persons.

## Report from Dr. Kristiina Hyrkäs Co-Chair of INDEN Newsletter and Publishing Committee

Dr. Catrin Evans (Editor of the INDEN Newsletter) and Dr. Kristiina Hyrkäs (the Co-Chair of INDEN Newsletter and Publishing Committee) had an opportunity to meet in London in November to discuss the newsletter. We were eager to discuss our ideas and questions and to consider opportunities for growth and development of the Newsletter. Key topics discussed during the meeting for follow up in 2007 are outlined below:



- First - in order to achieve the best possible efficiency there is a need to revisit and discuss the Publishing Committee's and the new Editorial Team's respective roles, functions and collaboration.
- There is a need to discuss and clarify the mission statement of the newsletter. In regularly published journals, the definitions of Aims and Scope are the starting point for the publishing process, since these serve as criteria for the reviewing process. It became clear during the discussion that it may be beneficial to revisit the mission statement of the INDEN Newsletter, and, possibly, to create some definitions concerning the Aims and Scope.

- The second important question raised was: (a) who are the members/active members of INDEN and (b) what would these members like to write in the Newsletter? The survey results published earlier this year give some ideas (INDEN, Vol 5:2, 3) concerning the topics. However, the number of people who answered the questions was limited, and thus there may be interesting and important issues that were not identified. During the discussion suggestions were made regarding possible additional global themes for writing: (a) personal experiences, (b) challenges in managing doctoral education, (c) national/international education policy/program developments and changes, (d) voices from the different continents, (e) different modes of learning.

- The final issue for discussion concerned how to activate INDEN members to write more for the Newsletter? How many issues/year need to be published?

The meeting was an excellent starting point for the collaboration of the Newsletter and Publishing Committee and the new Editorial Team. Another meeting will be convened in April 2007 in UK.

## INDEN UPDATES

### INDEN/STTI International Postdoctoral Mentoring Fellowships: UPDATE



The Selection Committee for the INDEN/STTI Postdoctoral Fellowships is pleased to announce that

it has finalized the placement of the selected fellows. We have worked with the fellows, and have used our gradually emerging doctoral program data base to achieve the best placements to enable the fellows to meet their objectives. They will work with senior faculty as their mentors and will be able to benefit from research-intensive educational environments. The institutions and their mentors are as follows:

**Dr. Usavadee Praditkul**, will work with **Dr. Kathleen Bowles**, at the University of Pennsylvania School of Nursing.

**Dr. Füsün Terzioğlu**, will work with **Dr. Richard Redman**, at the University of Michigan School of Nursing.

**Dr. Patraporn Tungpunkom**, will work with **Dr. Ian Norman**, at the Florence Nightingale School of Nursing and Midwifery, King's College London.

They will begin their three-month fellowships in Winter 2007. We are very excited with the opportunities these scholars will have in these settings, and at the same time, most grateful to the three institutions and mentors for being welcoming and facilitative of the arrangements to make the visits possible. Most importantly, INDEN would like to express its appreciation to Sigma Theta Tau International, our partner, for sharing the support of these fellowships. A biography of the three fellows appeared in the INDEN *Newsletter* of August 2006.

In the near future we will be announcing the second round of these competitions, and invite our members to begin giving thought to eligible members they might encourage to apply.

I would also like to express my great appreciation to the International Selection Committee members for their important assistance throughout this process.

Shaké Ketefian, Chair of Committee

#### Members:

Dr. Ingalill Rahm Hallberg  
Dr. Somchit Hanucharunkul  
Dr. Hugh Mckenna  
Dr. Nancy Sharts-Hopko, STTI Board Liaison  
Dr. Richard Redman, INDEN Board Liaison

## INDEN UPDATES (continued)

### INDEN MENTORING TASK FORCE UPDATE ON POSITION PAPER

**Callista Roy**  
Boston College



The Task Force will forward the initial version of the position paper on mentoring to the response team for review in early January.

We anticipate being able to present the Position Paper for response of the membership at the 2007 Conference in Tokyo, Japan.

The following persons are currently on the task force and review team. To expedite the review process, we ask each person on the list and any additional volunteers, to send updated email and postal addresses by January 1, 2007. Send to: [kathryn.meyers.1@bc.edu](mailto:kathryn.meyers.1@bc.edu) or Kate Meyers, Assistant to Nurse Theorist, Boston College, Connell School of Nursing 140 Commonwealth Avenue Chestnut Hill, MA 02467 USA.

Sr. Callista Roy USA, Co-Chair

Val Ehlers, So. Africa, Co-Chair  
Julia Mekwa, So. Africa  
Seepan Kantawang, Thailand  
Terestata Barcelo, Philippines  
Rosalina Roderiguez, Brazil  
Donna Mead, UK  
Sally Wellard, Australia  
Patricia Davidson, Australia  
Kathryn Weaver, Canada  
Pao Chen Lin, Taiwan  
Nei Yueh Chang, Taiwan  
Yu Hua Lin, Taiwan  
I Lee, Taiwan  
Huey Ing Lee, Taiwan

### Seminar Report: Building a program of research in women's health: doctoral and postdoctoral students face the future

**Patricia Davidson**  
University of Western Sydney



In conjunction with The International Council on Women's Health Issues Scientific Congress in Sydney Australia, The University of Western Sydney in Sydney and Queensland University of Technology in Brisbane co-hosted an INDEN seminar for doctoral and post doctoral researchers to explore issues facing research in women's health in a half day seminar. Students and faculty from Japan, Thailand, Australia, Iran and the United States met to discuss issues facing research in women's health.

Dr Redman provided a welcome message for students and faculty from INDEN Members globally. In his message he affirmed INDEN's commitment to knowledge generation and the

preparation of nurse scientists through quality doctoral education in nursing. Associate Professor Debra Anderson from the Queensland University of Technology, Australia provided an exciting and stimulating presentation on strategies for building a program of research in women's health. She shared her journey from her doctoral candidature to developing an independent program of research in women's health that is internationally recognised.

In her presentation Professor Anderson discussed the importance of collaboration and maintaining a focus and synergy in research activities. Leila Gholizadeh, a doctoral candidate from Iran studying at the University of Western Sydney outlined her program of research in the investigation of perception of cardiovascular risk in Middle Eastern Women. Leila

outlined the methodological challenges she had faced and some of the solutions she had developed in undertaking a project among a range of language and cultural groups in the Middle East. Associate Professor Patricia Davidson facilitated discussion around the workshop objectives and the parallels and differences in people's experience of doctoral education.



Students enjoyed the opportunity to interact and discuss issues that face researchers globally in women's health. Students agreed that in the future they would like to continue the discussion and debate in making the transition from a doctoral research degree to becoming an independent researcher with a collaborative program of research.

One student commented: "It was great to

## INDEN UPDATES (continued)

### Seminar Report (continued)

hear the frank and honest stories of the faculty members on how their programs of research have evolved...it would be good to hear more about that...the things you don't read in a text book." Another student commented: "I loved Dr Anderson's suggestions on maintaining focus in your doctoral program, yet saving those bright ideas for future research... I also appreciated that suggestion on turning your dissertation into a book... I am definitely going to think about that one and discuss it with my advisor."

During the workshop students also gained an increased understanding of the social, political and economic issues facing women's health. A key resolution of the meeting was that women's health issues impact broadly on the health and well-being of communities not just individual women. This allowed students to think of the potential of their research across a range of issues



and funding opportunities.

Significantly, the group discussed the importance of supporting colleagues in developing countries to undertake research to improve the situation of women. It was considered that education and empowerment was an important strategy for improving women's well-being globally. The INDEN meeting was an excellent way for participants to meet new colleagues and make new friends prior to The International Council on Women's Health Issues (ICOWHI) Congress. It was wonderful to see these relationships continued during the discussion and debate at the meeting and we hope to have a similar meeting as a satellite to the ICOWHI Meeting in Botswana in 2008.

## DEVELOPMENTS IN INTERNATIONAL DOCTORAL PROGRAMMES

### First doctorates at the Institute of Nursing Science of the University of Basel

**Sabina De Geest**  
University of Basel

Six years after the Institute of Nursing Science was established at the University of Basel as the first academic institute offering graduate education for nurses in Switzerland, the University of Basel granted the country's first doctorates to René Schwendimann and Kris Denhaerynck who both graduated magna cum laude. Both students had Professor Dr. Sabina De Geest as dissertation chair.

**René Schwendimann** has pursued a varied career in nursing management and education. Since 2001, René has worked both as an assistant at the Institute of Nursing Science at the University of Basel and as a quality manager in the nursing department of a 300-bed urban hospital in Zurich. In 2001, when asked to envision what he would like to be doing in five years, René replied, "I'd like to be the first Swiss doctoral graduate in Nursing Science." In the busy days that followed, this statement was filed away. Five years later, though, in the summer of 2006, as his vision became reality, he recalled that moment. While becoming a nursing scientist in Switzerland, especially the first PhD in Nursing Science, may have been a pioneering endeavour, though, it was not a solitary one. On the contrary, he has no illusions that his professional and academic career could have reached this level without the support and understanding of family, colleagues and mentors: "I've experienced it as a journey on which many helping hands, hearts and thoughts have supported me."

His dissertation concerned patient falls in the hospital setting, and focused on characteristics of in-patient falls, risk assessment, nurse-led and interdisciplinary fall prevention. The newly-titled Doctor Schwendimann was immediately appointed Head of Education at the Institute of Nursing Science. In this role he has already begun managing the Institute's wide range of educational and curriculum team development activities, and hopes to further develop his research program on patient safety and care quality.



## DEVELOPMENTS IN INTERNATIONAL DOCTORAL PROGRAMMES

### First doctorates at the Institute of Nursing Science (continued)



**Kris Denhaerynck** graduated in 1996 in Belgium as a psychiatric nurse. He worked for a number of years as a research assistant at the Center for Health Services and Nursing Research at the Katholieke Universiteit Leuven, working on projects on clinical leadership, mammography screening, and discharge planning in psychiatric hospitals. In November 2002, he joined the Institute of Nursing Science at the University of Basel. Dr. Denhaerynck's dissertation focused on "Exploring risk factors of non-adherence to immunosuppressive medication in kidney transplant recipients: Improving methodology and reorienting research goals." Kris will continue to work at the Institute of Nursing Science where he will be engaged both in teaching and research activities.

For more information contact: [nursing@unibas.ch](mailto:nursing@unibas.ch), [www.nursing.unibas.ch](http://www.nursing.unibas.ch)

### First Doctoral Program in Nursing in China Update: November 20, 2006

**Marie T. Nolan**  
**Johns Hopkins University**

A second cohort of PhD students has enrolled in the first doctoral program in nursing in China that was launched in 2004 through the collaboration of the Schools of Nursing at Peking Union Medical College (PUMC) in Beijing and Johns Hopkins University (JHU) in Baltimore, MD, USA. This brings the total number of students in the program to ten. The program, which is funded by the China Medical Board, prepares Chinese nurse leaders for careers in higher education for nursing, nursing research, and health care administration. The program's goal is to increase the number of doctorally prepared nurses in China and to develop a nationally recognized doctoral-level model for nursing education for China and the Chinese health care system.

The first cohort of students is in year two of the three-year program. Having completed their required

coursework at PUMC, students in this group have been at JHU School of Nursing since July taking additional courses and working with faculty co-advisors on their dissertation proposals and related publications. They will return to PUMC in mid-December to conduct their China-based doctoral research. Students are examining issues related to 1) Nutritional risk screening in hospitalized patients, 2) Management of chronic illness in children, 3) Factors

related to menstrual irregularity and menstrual symptoms, 4) Retention of patients in methadone treatment, and 5) Promotion of nutritional intake in patients with head and neck cancer. The Program Directors are the Dean of PUMC School of Nursing, Huaping Liu, PhD, who received her doctorate in nursing at George Mason University in the US, and Victoria Mock, PhD, of the JHU School of Nursing. Marie Nolan, PhD is the JHU School of Nursing Co-Director.



**Names of those pictured From left to Right**

Front Row: Dr. Marie T. Nolan, Dr. Li Zheng, Dean Huaping Liu, Dean Martha Hill  
Back Row Doctoral Students: Ms Liang Tao, Ms He Zhong, Ms Gao Feng Li, Ms Liang Xiaokun, and Ms Li Yang.

## UPDATE ON AN INTERNATIONAL COLLABORATIVE DOCTORAL NURSING PROGRAM IN THAILAND

**Phanida Juntasopeepun**  
**Chiang Mai University**

The Faculty of Nursing, Chiang Mai University, Thailand, offers the Program for the degree of Doctor of Philosophy in Nursing. Our program aims to prepare leaders in the development of nursing science and health care management. We run a national and international PhD program. The international program is a collaborative endeavour in which students spend some semesters in the Faculty of Nursing, Chiang Mai University, and some at universities abroad. They work with advisors from Thailand and from the overseas universities. The degree of Doctor of Philosophy in Nursing is awarded by Chiang Mai University. Currently, sixteen overseas universities are part of our collaborative program. Doctoral students select universities that have scholars or researchers specializing in their area of research. The sixteen universities are:

[Indiana University, USA](#)

[University of Alabama, Birmingham, USA](#)

[University of California, San Francisco, USA](#)

[University of Hawaii at Manoa, USA](#)

[University of Illinois at Chicago, USA](#)

[University of Michigan, Ann Arbor, USA](#)

[University of Pennsylvania, USA](#)

[University of Texas at El Paso, USA](#)

[University of Texas Health Science Center at Houston, USA](#)

[University of Virginia, USA](#)

[University of Washington, Seattle, USA](#)

[Wayne State University, USA](#)

[University of Alberta, Canada](#)

[La Trobe University, Australia](#)

[University of Technology, Sydney, Australia](#)

[University of Western Sydney, Australia](#)



## STUDENT EXPERIENCE

### Doctoral Study Abroad: Experiences of a Taiwanese Student

**Ling Ling Lee**  
Tzu Chi College of Technology



My PhD study in the School of Nursing, University of Nottingham, U.K. commenced on September

2002 and completed in July 2006. My research - an evaluation of the effect of a community-based walking intervention on blood pressure control among hypertensive older people was carried out by the design of a randomised controlled trial.

Studying for a PhD is always a challenge, but particularly when the study is carried out abroad. Extra time spent on adapting to a new environment,

entirely different systems within a multicultural society, as well as financial pressure is inevitable in an overseas PhD study. However the other side of these difficulties is the opportunity to enhance a broader perspective through international cooperation with an efficient and effective research team, to develop better problem-solving and communication skills (with second language), and eventually to be an independent researcher with more proficient research skill. During the nearly four-year study, I built up a more critical mind in appraising evidence for providing health care and developed a clear understanding about designing, conducting and reporting an experimental study. Recent success in publishing my results is a very meaningful step to start my further academic career, and has given me great inspiration.

I am now back in my country, Taiwan, and work in the Department of Nursing, Tzu Chi College of Technology. After giving a presentation to my colleagues on randomised controlled trials, we are planning a research new module on experimental design. In the meantime, the work of writing further papers and figuring out new projects with the original research team in the UK and new team in Taiwan is carried on.

In the future, I hope to contribute something in the domain of evidence-based nursing practice through disseminating the knowledge and skills of experimental study and through conducting relevant studies in the field of physical activity and older people. I look forward to cooperating with international nursing scholars through INDEN.

## RESEARCH UPDATE

### Research Update: Doctoral Education for the Health Professionals in the UK: An Illuminative Evaluation

**Lorraine Ellis**  
University of Sheffield

The professional doctorate is a product of its time developed in response to changes within higher education and the wider society that demands the production of applied knowledge having relevance to practice. If they are carefully constituted such programmes provide a complementary route to the more traditional PhD which has the potential to reduce the theory/practice divide and increase the evidence base for nursing practice.

Funded by the General Nursing Council Trust this project studies doctoral provision (Professional doctorate and PhD) offered at 7 centres purposively selected from along a continuum of provision identified during a previous study that mapped the distribution and range of provision in

the UK (Ellis 2005).

Using a modified form of illuminative case study (Ellis 2004) students' ( $n = 127$ ) doctoral journey is charted throughout their programme and post doctorate and follows their career trajectory. This research reports students' expectations and experiences of doctoral education over time and the impact on professional practice, academic and clinical.



Data collection methods include focus groups and telephone interviews with students' pre doctorate and at six month intervals during the taught and research phase of the programme and each year subsequently. Educators ( $n = 55$ ) and sponsors ( $n = 33$ ) are telephone interviewed to explore the perceived relevance of doctoral education for the workforce. The written

curriculum is content analysed and compared with the lived experiences of students' and the views of educators and sponsors. The views of students enrolled on a PhD, those who have transferred from a PhD to a professional doctorate and vice versa are also reported.

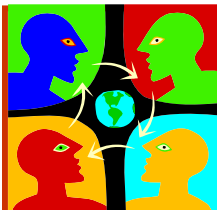
This study provides the beginnings of an evidence base for this increasingly popular form of provision likely to be of interest to policy makers, providers and sponsors of doctoral education, and those at the cross roads of whether to pursue a PhD or a professional doctorate.

Ellis L.B. (2004) Illuminative case studies. In Bassett C. (Ed) *Qualitative Research in Health Care*. Whurr Publishing. 5: 90-114.

Ellis L.B. (2005) Professional doctorates for nurses in the United Kingdom: mapping and perceptions. *Journal of Advanced Nursing*. 4 (50), 440-448



## CONFERENCE ANNOUNCEMENTS



### A Valuable Learning Opportunity for Doctoral Students Eastern Nursing Research Society Annual Scientific Session “Building Communities of Scholarship and Research” April 12-14, 2007, Westin Providence, Providence, RI, USA

The President and Board of the Eastern Nursing Research Society are pleased to announce that international doctoral students are welcome to participate in the 19<sup>th</sup> Annual Scientific Sessions to be held from April 12-14, 2007 at the Westin Providence in Providence, RI, USA. This is a valuable learning opportunity and is well attended by doctoral students from throughout the eastern USA as well as leading scholars. All students are eligible for reduced registration fees. A special reception for all doctoral students is included in the conference schedule for Friday evening so that students will have an opportunity to network with one another and develop networking strategies with other scholars. The Theory Research Interest Group is planning a half day pre-conference symposium that also is particularly relevant for doctoral students.

For additional information see Eastern Nursing Research Society website [www.enrs-go.org](http://www.enrs-go.org)

Submitted by: Sr. Callista Roy, Boston College, Connell School of Nursing, Chestnut Hill, MA, USA, ENRS, Co-Chair Theory

### Conference Announcement

The Honor Society of Nursing, Sigma Theta Tau International will host its 18<sup>th</sup> **International Nursing Research Congress Focusing on Evidence-Based Practice** in Vienna, Austria, 11-14 July 2007. More than 1,000 nurse leaders representing countries from throughout the world are expected to attend.



We respectfully invite you to submit an abstract (deadline 13 Dec. 2006) and/or host an exhibit (application attached) during the congress. The attached flyer includes additional details and more information is available on our Web site at [www.nursingsociety.org](http://www.nursingsociety.org). We sincerely hope you will share this information with your colleagues and post the conference date on your organizational Web site.

The honor society will also be hosting an **international induction ceremony for nurse leaders** during the Vienna research congress. If you know someone who is interested in becoming an honor society member, please contact Sabrina Hardimon-Collins ([sabrinah@stti.iupui.edu](mailto:sabrinah@stti.iupui.edu)) for more information.

Nancy Dickenson-Hazard,  
Chief Executive Officer,  
Honor Society of Nursing,  
Sigma Theta Tau International

## CONFERENCE ANNOUNCEMENTS (continued)

### 8<sup>th</sup> Annual Roy Adaptation Association 2007 Workshop and Conference Mount Saint Mary's College, Los Angeles, CA June 14-15, 2007



#### Call for Abstracts

The Core Planning Committee of the Roy Adaptation Association (RAA) invites submissions of abstracts on **The Roy Adaptation Model and Evidence-Based Practice: Linking Research, Education, and Practice** for the eighth annual conference. Abstracts of work using the Roy Model may address a signal aspect of the theme or given links. Submissions from new scholars and students are encouraged as well as those from experienced participants.

#### Instructions for abstract submission:

1. Submit two abstracts
  - a. one with name(s) and address
  - b. one for blind review, i.e. NO personal identifying information
2. No more than one page typed

Two outstanding abstracts will be selected for podium presentations at the conference, and one student abstract will be selected for poster presentation at the evening poster session and awards ceremony on June 14, 2007. Authors of the abstracts will be presented with an award in honor of General and Mrs. Humberto Velasco and Lissie Velasco Whetsell by RAA Core Planning Committee member Martha Velasco-Whetsell, PhD, RN, to further nursing research and education. Other abstracts will be considered for poster presentations.

Deadline for abstract submissions: **February 16, 2007**

Notifications will be made by: **March 16, 2007**

Questions? Contact Kate at 617-552-8862 or Kathryn.meyers.1@bc.edu

### European Academy of Nursing Science (EANS) Doctoral Summer School Programme: an Opportunity for European Doctoral Nursing Students at the Start of their Programmes

The EANS Summer School Programme is a three year course which aims to:

- provide a common European perspective for doctoral nursing research;
- create a multi-state learning environment for doctoral nursing students;
- improve the quality of nursing practice by increasing the research evidence used in nursing within Europe;
- enhance the opportunities for doctoral students to study, work and undertake research in other European States.

Participants attend three consecutive summer schools held across Europe. In year one, the summer school is two weeks long, in years two and three it is for one week. For new applicants, the 2007 summer school will be from **25<sup>th</sup> June to 6<sup>th</sup> July, 2007**, in the beautiful medieval city of York, UK.

The summer schools are arranged around four major themes: **Researching Health and Nursing in Europe; Developing Concepts for Researching Nursing; Research Methods; Developing a Research Career.**

**Funding:** The Summer School Programme is supported by the European Union Framework 6 Marie Curie Fund. Participants receive some support to pay for travelling, accommodation and subsistence expenses.

**How to apply.** Further details and application form at:  
<http://www.european-academy-of-nursing-science.com/>



## REMINDERS/OTHER



### INTERNATIONAL NETWORK FOR DOCTORAL EDUCATION IN NURSING

#### CALL FOR ABSTRACTS TO NURSING DOCTORAL STUDENTS

DURING INDEN MEETING, MAY 26-27, 2007  
St. Luke's College of Nursing, Tokyo, Japan

The INDEN Conference Planning Committee invites doctoral students to submit Poster Abstracts, which will be displayed during the two days of the conference at the meeting site.

**Students must follow all instructions and submission guidelines.**

**Membership in INDEN is required prior to submission.**

#### Definition of a Student Poster Presentation

Reports of completed research or research in progress may be presented. The 300-word abstract should include: title, statement of the problem, theoretical/conceptual framework, subjects, methodology, results and implications. For research in progress, the anticipated method of analysis should be included.

**Poster boards will be provided to put up posters.** Handouts may be used, but audiovisual equipment will **not** be available.

#### Review Criteria

Posters will be reviewed and judged based on scientific merit. A committee of INDEN members will rate the submitted abstracts using the following criteria, as appropriate:

- Clarity of the problem/question
- Theoretical/conceptual framework or philosophical foundation
- Soundness of methodology and design
- Appropriateness of analysis
- Interpretation of findings
- Relevance of research to nursing

**Once notified of acceptance, if students agree to present their posters, they must register for the INDEN conference. No abstracts will be presented in the absence of the student author. Conference fees are the responsibility of the student.**

#### Submission Information and Deadlines

1. Abstracts **must** be submitted on-line to [studentabstracts@umich.edu](mailto:studentabstracts@umich.edu) by February 15, 2007.
2. Two copies must be submitted, one with no name/identifying information, the other with name and all contact information.
3. Notification of acceptance will be sent via email by late March, 2007.

## REMINDERS/OTHER (continued)

### INDEN membership information for the January 2007 Newsletter

Our transition to a one-year membership period is complete. Thank you all for renewing your membership to this active and vibrant organization!

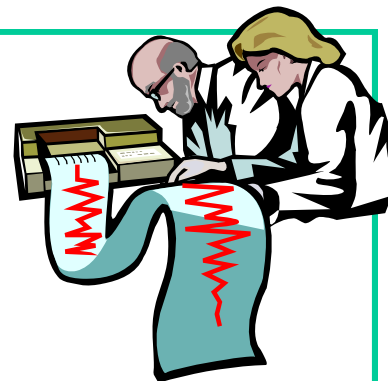
Here's a quick look at our current membership composition:

- we have 220 active members from 23 countries
- 34 new members have joined so far this year
- 32% of the members are Doctoral students
- 70% of the members are from Band 1, 23% from Band 2 and 7% from Band 3

Based on the data in our membership database, INDEN has had 335 members during the past six years. Our peak growth year was 2003 when we added 73 new members! There's plenty of room for more members, so please invite others to join via the INDEN website membership section at <http://www.umich.edu/~inden/>.

If you have any questions, please contact me at [janem@umich.edu](mailto:janiem@umich.edu).

**Janie McMillen**  
Administrator for INDEN



### INDEN Biennial Meeting, May 26-27, 2007

“Critical Challenges in Nursing Doctoral Education  
for the 21<sup>st</sup> Century”

### Doctoral Student Workshop, May 28, 2007

Location: St. Luke's College of Nursing, Tokyo, Japan

Held in conjunction with the ICN Conference and Scientific Program in Yokohama, Japan.

Program details will be available on the INDEN website in February:

<http://www.umich.edu/~inden/>

**MARK YOUR CALENDARS!!!**

## REMINDERS/OTHER

---



### Write an article for the newsletter!

Deadline for submissions for the April 2007 newsletter is March 16th, 2007.

Please send items to: [catrin.evans@nottingham.ac.uk](mailto:catrin.evans@nottingham.ac.uk)

---



If you would like additional information on the International Network for Doctoral Education in Nursing, please contact:

Office of International Affairs  
University of Michigan  
School of Nursing  
400 N. Ingalls, Room 3216  
Ann Arbor, MI 48109-0482

Email: [inden@umich.edu](mailto:inden@umich.edu)  
Fax: 734/615-3798

